

**HEADERS  
FOR P.C.B.**

**CONNETTORI MASCHIO  
PER C.S.**

**CONNECTEURS MÂLE  
POUR C.I.**

**STIFTLISTE  
FÜR LEITERPLATTEN**

Pitch Pas	Passo Rastermaß	mm
Rated Voltage Tensione nominale Tension nominale	Tensione nominale Bemessungsspannung	V
Rated Current Intensità nominale	Corrente nominale Bemessungsstrom	A

Temperature Température	Temperatura Temperatur	°C
Housing Corps isolant	Corpo isolante Isolierkörper	

	IMQ	EN61984
	VDE	EN61984
	cUL	UL1059 + C22.2 n°158

Poles Pôles	Poli Polzahl	X
Colours Couleurs	Colori Farben	Y
Other information Autres données	Altri dati Weitere Informationen	D-

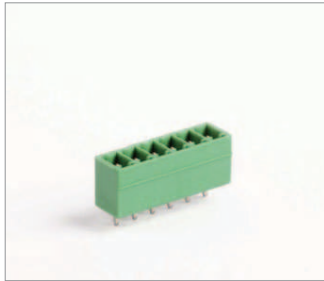
How to order Référence de commande	Ordinazione Bestellschlüssel
<b>MRT9 P3,5 / X SQ Y N...</b>	
Type Pitch Poles Version Colors Printing	
Tipo Passo Poli Versione Colori Numerazione	
Type Pas Pôles Version Couleurs Marquage	
Typ Rastermaß Polzahl Version Farben Bedruckung	

**MRT9 MRT9..SQ\***

Single block · Blocco unico  
Monobloc · Einzelblock

Poles · Poli · Pôles · Polzahl

2/20

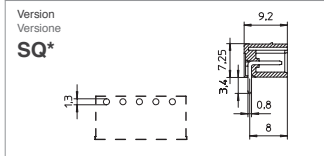
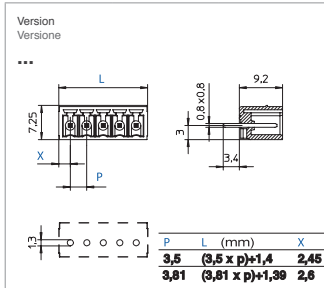


3,5 - 3,81
200
12

110
PA - UL 94 V0

V	A	mm <sup>2</sup> /AWG
150	12	0,2 ÷ 1,0
300	8	30 ÷ 16

min 2 - max 20		
VE	/ on demand	GR GR1 NE AR BL RO GI
D/B4		

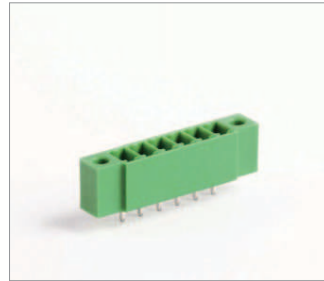


**MRT9..FV MRT9..SQ\* FV**

Single block · Blocco unico  
Monobloc · Einzelblock

Poles · Poli · Pôles · Polzahl

2/20

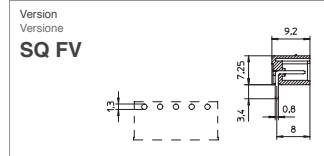
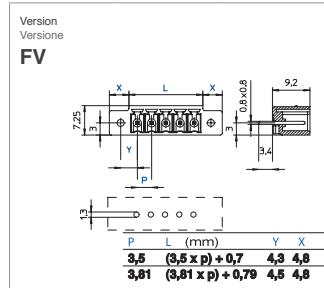


3,5 - 3,81
200
12

110
PA - UL 94 V0

V	A	mm <sup>2</sup> /AWG
150	12	0,2 ÷ 1,0
300	8	30 ÷ 16

min 2 - max 20		
VE	/ on demand	GR GR1 NE AR BL RO GI
D/B4		



**MRT9 MRT9..SQ\***

Single block · Blocco unico  
Monobloc · Einzelblock

Poles · Poli · Pôles · Polzahl

2/10

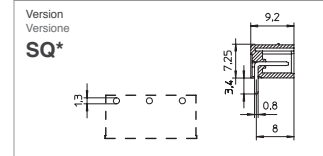
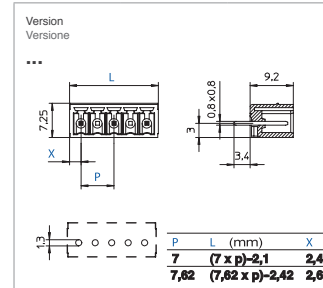


7 - 7,62
400 - 500
12

110
PA - UL 94 V0

V	A	mm <sup>2</sup> /AWG
400 (7)	500 (7,62)	12
300	8	30 ÷ 16

min 2 - max 10		
VE	/ on demand	GR GR1 NE AR BL RO GI
D/B4		

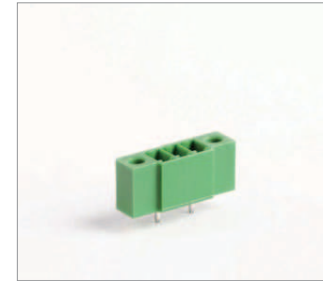


**MRT9..FV MRT9..SQ\* FV**

Single block · Blocco unico  
Monobloc · Einzelblock

Poles · Poli · Pôles · Polzahl

2/10

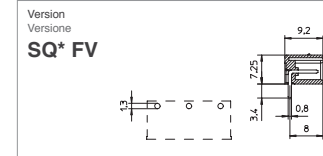
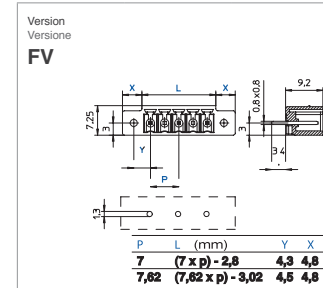


7 - 7,62
400 - 500
12

110
PA - UL 94 V0

V	A	mm <sup>2</sup> /AWG
400 (7)	500 (7,62)	12
300	8	30 ÷ 16

min 2 - max 10		
VE	/ on demand	GR GR1 NE AR BL RO GI
D/B4		

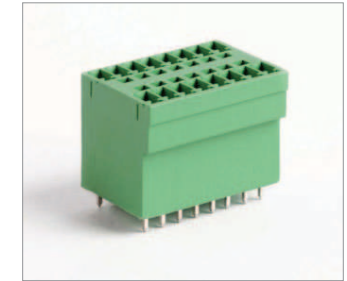


**MRT33 MRT33..SQ\***

Single block · Blocco unico  
Monobloc · Einzelblock

Poles · Poli · Pôles · Polzahl

2/12

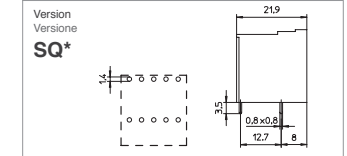
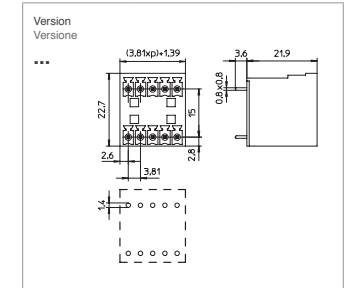


3,81
200
10

110
PA - UL 94 V0

V	A	mm <sup>2</sup> /AWG
300	8	30 ÷ 16

min 2 - max 12		
VE		
D/B4		



\* SQ Version = Horizontal version