

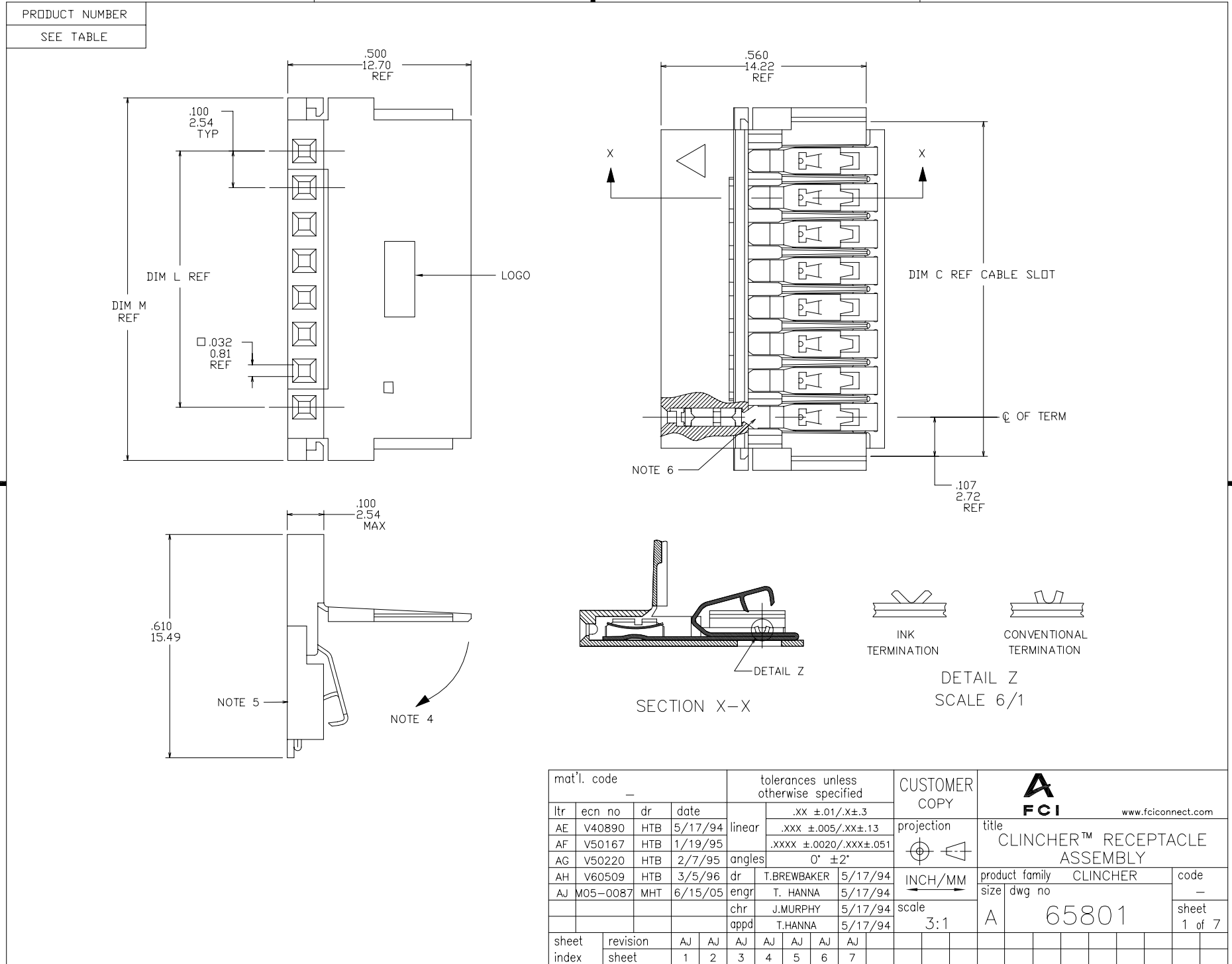
Tous droits strictement reserves. Reproduction ou communication a des tiers
interdite sous quelque forme que ce soit sans autorisation ecrite du proprietaire.
Propriete de c FCI. Droits de reproduction FCI.

FCI

All rights strictly reserved. Reproduction or issue to third parties in any
form whatever is not permitted without written authority from the proprietor.
Property of FCI. Copyright FCI.

A

B



A

B

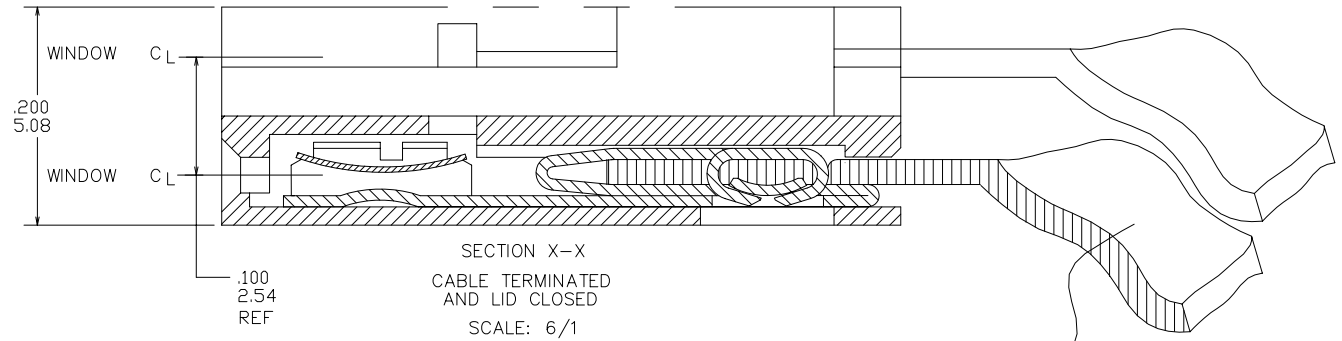
PRODUCT NUMBER
SEE TABLE

PLATING AVAILABLE

PLATING CODE	TERMINAL	SPRING
1	100u"/2.54u MIN. THICK 60/40 TIN LEAD	10u"/.25u MIN. THICK 60/40 TIN LEAD
2	30u"/.76u MIN. GOLD STRIPE IN BOX AREA	3u"/.08u MIN. GOLD OVER 50u"/1.27u MIN. NICKLE
3	100u"/2.54u MIN. THICK PURE TIN	10u"/.25u MIN. THICK PURE TIN

PRODUCT NUMBER
65801-XXXLF

LEAD FREE OPTION
NOTE 9,10
NO OF POSITIONS
AND PLATING
BASE PART NUMBER



NOTES:

- MOLDING MAT'L: POLYPROPYLENE, FLAME RETARDANT PER UL 94V-0. COLOR: BLUE.
- TERMINAL MAT'L: 1/2 HARD CuNi ALLOY, UNS-C72500. PLATING: SEE TABULATION AND PLATING TABLE.
- SPRING MAT'L: 1/2 HARD BeCu ALLOY, UNS-C17200. PLATING: SEE TABULATION AND PLATING TABLE.
- LATCH SWINGS CLOSED AFTER TERMINATION MAINTAINING A MAX OVER ALL HEIGHT OF .100/2.54
- LABEL IN THIS AREA P/N AND DATE LOT CODE (WEEK AND YEAR) ON DASH No.-067 AND -167 ONLY.
- KNURL MARK INDICATES FOR USE WITH INK TERMINATION. CONSULT WITH BERG ELECTRONICS TECHNICAL REPRESENTATIVE FOR SPECIFIC APPLICATIONS.
- POSITION NUMBERS INITIATE FROM TRIANGULAR MARK ON HOUSING. SEE TABULATION FOR POSITION No CLOSED AND TERMINAL No ABSENT. FIG A SHOWS POSITION No 2 CLOSED.
- AN EIGHT DIGIT PART NUMBER FOLLOWED BY A "J" INDICATES INVENTORY FOR JAPAN ONLY.
- ADD "LF" SUFFIX AT THE END OF PART NUMBER FOR LEAD FREE OPTION.
- THIS PRODUCT MEETS EUROPEAN UNION DIRECTIVES AND OTHER COUNTRY REGULATION AS DESCRIBED IN GS-22-008.
- THE PRODUCT IS NOT INTENDED TO BE EXPOSED TO A MANUFACTURING SOLDER PROCESS

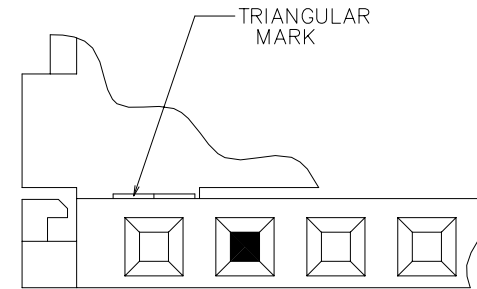



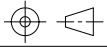


FIG A
NOTE 7

mat'l. code				—				tolerances unless otherwise specified				CUSTOMER COPY		<div><div></div><div>www.fciconnect.com</div></div>						
ltr	ecn no	dr	date	linear	.XX ±.01/.X±.3				projection	title CLINCHER™ RECEPTACLE ASSEMBLY										
AJ					.XXX ±.005/.XX±.13															
					.XXXX ±.0020/.XXX±.051															
				angles	0° ±2°				<div></div> <div>INCH/MM</div> <div>scale 3:1</div>	product family				CLINCHER				code		
				dr	T.BREWBAKER		5/17/94			size				dwg no				—		
				enr	T. HANNA		5/17/94													
				chr	J.MURPHY		5/17/94													
				appd	T.HANNA		5/17/94						A				65801			
sheet index		revision sheet																		

cage code
22526

1 2							3 4				
PRODUCT NO. NOTE 9	NO. OF POSITIONS	DIM. L	DIM. L	DIM. M	DIM. M	DIM. C	DIM. C	PLATING	TERMINATION		LF PLATING CODE
		ENGLISH	METRIC	ENGLISH	METRIC	ENGLISH	METRIC	CODE	NOTE 6	NOTES	
65801-001			U N A	S S I G	N E D						
65801-002	2	0.100	2.54	0.390	9.91	0.315	8.00	1	CONVENTIONAL	—	3
65801-003	3	0.200	5.08	0.490	12.45	0.415	10.54	1	CONVENTIONAL	—	3
65801-004	4	0.300	7.62	0.590	14.99	0.515	13.08	1	CONVENTIONAL	—	3
65801-005	5	0.400	10.16	0.690	17.53	0.615	15.62	1	CONVENTIONAL	—	3
65801-006	6	0.500	12.70	0.790	20.07	0.715	18.16	1	CONVENTIONAL	—	3
65801-007	7	0.600	15.24	0.890	22.61	0.815	20.70	1	CONVENTIONAL	—	3
65801-008	8	0.700	17.78	0.990	25.15	0.915	23.24	1	CONVENTIONAL	—	3
65801-009	9	0.800	20.32	1.090	27.69	1.015	25.78	1	CONVENTIONAL	—	3
65801-010	10	0.900	22.86	1.190	30.23	1.115	28.32	1	CONVENTIONAL	—	3
65801-011	11	1.000	25.40	1.290	32.77	1.215	30.86	1	CONVENTIONAL	—	3
65801-012	12	1.100	27.94	1.390	35.31	1.315	33.40	1	CONVENTIONAL	—	3
65801-013	13	1.200	30.48	1.490	37.85	1.415	35.94	1	CONVENTIONAL	—	3
65801-014	14	1.300	33.02	1.590	40.39	1.515	38.48	1	CONVENTIONAL	—	3
65801-015	15	1.400	35.56	1.690	42.93	1.615	41.02	1	CONVENTIONAL	—	3
65801-016	16	1.500	38.10	1.790	45.47	1.715	43.56	1	CONVENTIONAL	—	3
65801-017	17	1.600	40.64	1.890	48.01	1.815	46.10	1	CONVENTIONAL	NOTE 8	3
65801-018	18	1.700	43.18	1.990	50.55	1.915	48.64	1	CONVENTIONAL	—	3
65801-019	19	1.800	45.72	2.090	53.09	2.015	51.18	1	CONVENTIONAL	—	3
65801-020	20	1.900	48.26	2.190	55.63	2.115	53.72	1	CONVENTIONAL	—	3
65801-021	21	2.000	50.80	2.290	58.17	2.215	56.26	1	CONVENTIONAL	—	3
65801-022	22	2.100	53.34	2.390	60.71	2.315	58.80	1	CONVENTIONAL	—	3
65801-023	23	2.200	55.88	2.490	63.25	2.415	61.34	1	CONVENTIONAL	—	3
65801-024	24	2.300	58.42	2.590	65.79	2.515	63.88	1	CONVENTIONAL	—	3
65801-025	25	2.400	60.96	2.690	68.33	2.615	66.42	1	CONVENTIONAL	—	3
65801-026	26	2.500	63.50	2.790	70.87	2.715	68.96	1	CONVENTIONAL	—	3
65801-027	27	2.600	66.04	2.890	73.41	2.815	71.50	1	CONVENTIONAL	—	3
65801-028	28	2.700	68.58	2.990	75.95	2.915	74.04	1	CONVENTIONAL	—	3
65801-029	29	2.800	71.12	3.090	78.49	3.015	76.58	1	CONVENTIONAL	—	3
65801-030	30	2.900	73.66	3.190	81.03	3.115	79.12	1	CONVENTIONAL	—	3
65801-031	31	3.000	76.20	3.290	83.57	3.215	81.66	1	CONVENTIONAL	—	3
65801-032	32	3.100	78.74	3.390	86.11	3.315	84.20	1	CONVENTIONAL	—	3

mat'l. code —				tolerances unless otherwise specified				CUSTOMER COPY		 www.fciconnect.com			
ltr	ecn no	dr	date	linear	.XX ±.01/.X±.3			projection 	INCH/MM ↔	title CLINCHER™ RECEPTACLE ASSEMBLY			
AJ					.XXX ±.005/.XX±.13								
					angles	.XXXX ±.0020/.XXX±.051 0° ±2°							
				dr	T.BREWBAKER	5/17/94	scale 3:1	A	product family CLINCHER		code —		
				engr	T. HANNA	5/17/94							
				chr	J.MURPHY	5/17/94							
				appd	T.HANNA	5/17/94			size dwg no		sheet 3 of		
sheet index	revision sheet												

A
—
O
L

B

A1

ACOLL

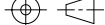
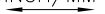
All rights strictly reserved. Reproduction or issue to third parties in any form whatever is not permitted without written authority from the proprietor.
Property of FCI. Copyright FCI.

B

A

1

PRODUCT NO. NOTE 9	NO. OF	DIM. L	DIM. L	DIM. M	DIM. M	DIM. C	DIM. C	PLATING	TERMINATION	CLOSED POS.	TERMINAL ABSENT	LF PLATING
	POSITIONS	ENGLISH	METRIC	ENGLISH	METRIC	ENGLISH	METRIC	CODE	NOTE 6	NOTE 7	NOTE 7	CODE
65801-201	16	1.500	38.10	1.790	45.47	1.715	43.56	1	CONVENTIONAL	4	4.5.6	3
65801-202	5	0.400	10.16	0.690	17.53	0.615	15.62	2	CONVENTIONAL	3	3	2
65801-203	7	0.600	15.24	0.890	22.61	0.815	20.70	2	CONVENTIONAL	6	1.2.6.7	2
65801-204	10	0.900	22.86	1.190	30.23	1.115	28.32	1	CONVENTIONAL	4	4	3
65801-205	6	0.500	12.70	0.790	20.07	0.715	18.16	1	CONVENTIONAL	5	5	3
65801-206	5	0.400	10.16	0.690	17.53	0.615	15.62	1	CONVENTIONAL	4	4	3
65801-207	7	0.600	15.24	0.890	22.61	0.815	20.70	2	CONVENTIONAL	N/A	1.2.6.7	2
65801-208	4	0.300	7.62	0.590	14.99	0.515	13.08	1	CONVENTIONAL	N/A	2.3	3

mat'l. code —				tolerances unless otherwise specified			CUSTOMER COPY		<div><div><div>A</div><div>FCI</div></div><div>www.fciconnect.com</div></div>				
ltr	ecn no	dr	date	linear	.XX ±.01/.X±.3			projection 	title CLINCHER™ RECEPTACLE ASSEMBLY				
AJ					.XXX ±.005/.XX±.13								
					.XXX ±.0020/.XXX±.051								
				angles	0° ±2°			INCH/MM 	product family CLINCHER				code
				dr	T.BREWBAKER	5/17/94	size dwg no			—			
				enr	T. HANNA	5/17/94	scale 3:1			A	65801	sheet 7 of	
				chr	J.MURPHY	5/17/94							
				appd	T.HANNA	5/17/94							
sheet index	revision sheet												