

### Features and Benefits

- High reliability, square contact
- EMI/RFI protection
- ISDN standard
- Industry standard footprint and height
- Shunt allows signal control and line check

### Reference Information

### Product Specification: PS-95040

**Packaging:** Tray

Mates With: FCC 68 plugs

**Designed In: Millimeters**

## Electrical

**Voltage: 125V**

Current: 1.5A

**Contact Resistance: 20mΩ max.**

**Dielectric Withstanding Voltage: 1000V**

**Insulation Resistance:** 500 MΩ min.

## Physical

Housing: Black polyester, UL 94V-0

**Contact: Phosphor Bronze**

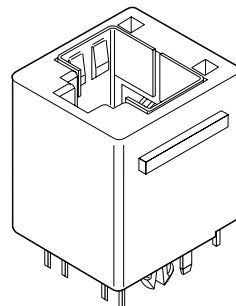
Plating: Post plate 1.27 to 1.52 $\mu$ m (50 to 60 $\mu$ " ) Gold  
in contact area, 1.90 $\mu$ m (75 $\mu$ " ) min. (90/10)

Tin/Lead in tail area both over Nickel overall

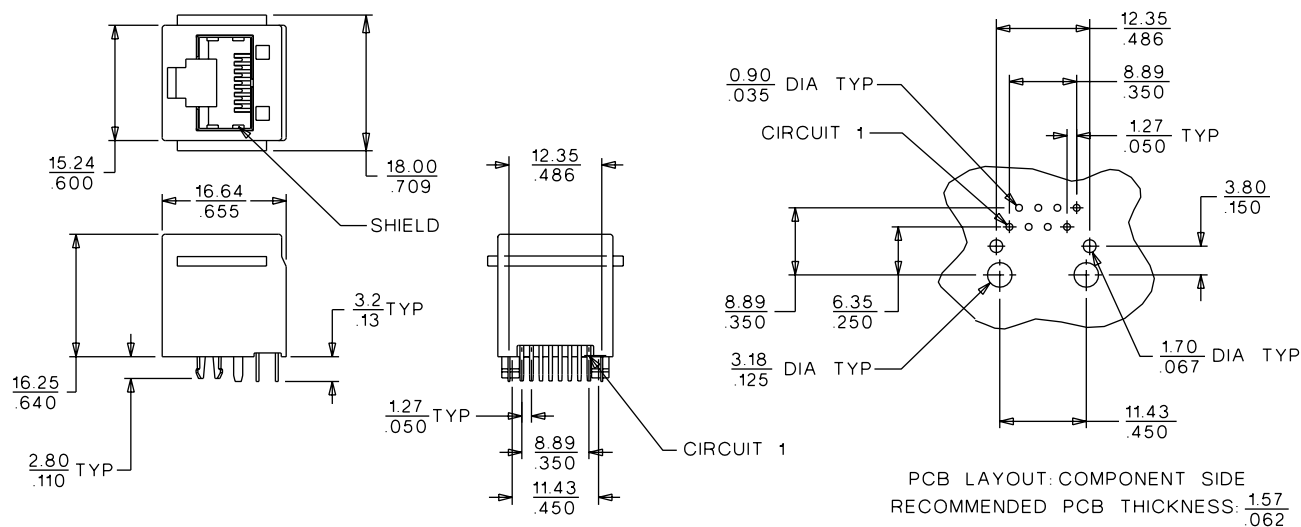
**Operating Temperature:** -40 to +80°C

**95052**

## Vertical, Standard Profile Internal Shield



**CATALOG DRAWING (FOR REFERENCE ONLY)**

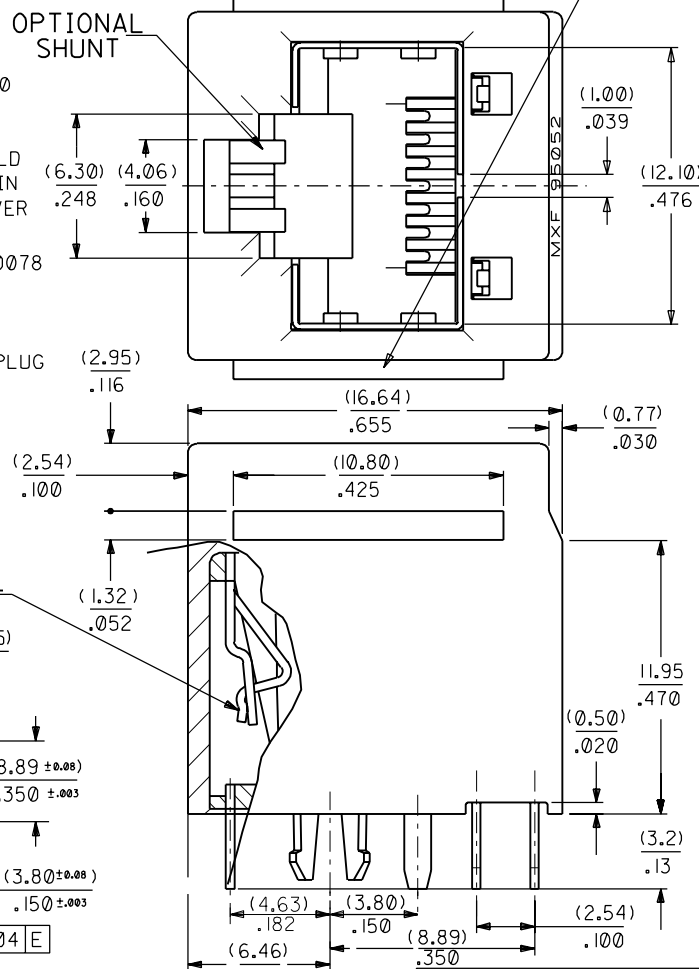
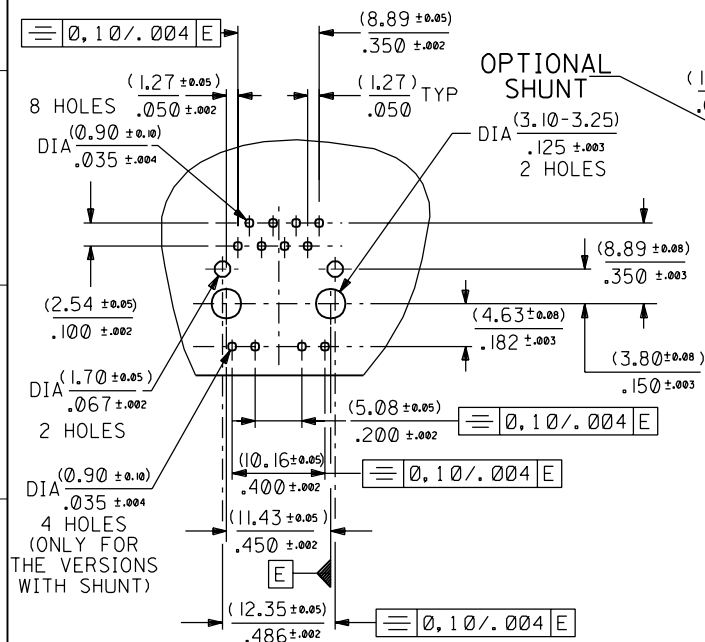


## ORDERING INFORMATION

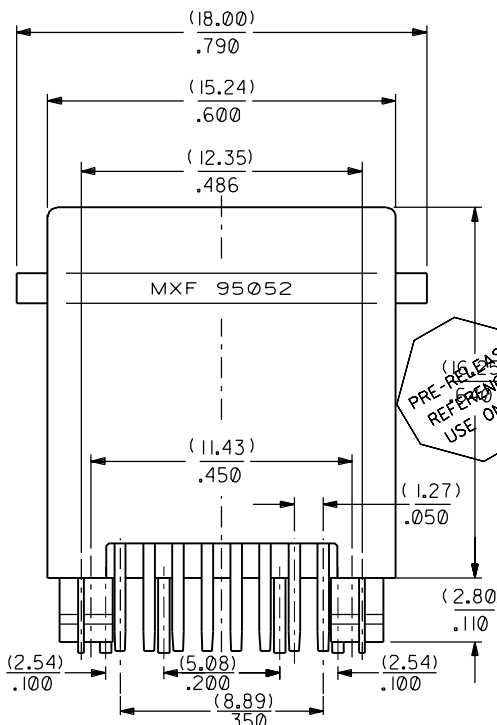
Circuits	Loaded Contacts	Order No.
8	8	95052-2887

# NOTES :

- 1- MATERIAL : HOUSING : POLYESTER G.F. 94V0  
COLOR : BLACK  
TERMINAL : PHOSPHOR BRONZE,  
PLATED WITH (0.00127)/.000050 MIN. GOLD  
IN CONTACT AREA , (0.00190)/.000075 MIN  
(90/10) TIN/LEAD IN TAIL AREA BOTH OVER  
(0.00127)/.000050 MIN NICKEL OVERALL  
SHIELD : BRASS PLATED WITH (0.0020)/.000078  
MIN TIN/LEAD  
SHUNT : PHOSPHOR BRONZE PLATED WITH  
(0.0020)/.000078 MIN TIN/LEAD
- 2- JACK FOR MATING WITH F.C.C. 68 TYPE PLUG  
MOLEX 95043 SERIES
- 3- P.C.BOARD THICKNESS : (1.57)/.062 .
- 4- PRODUCT SPECIFICATION PS-95040
- 5- APPLICATION SPECIFICATION AS-95001
- 6- PACKAGING SPECIFICATION PK-95022



ENG. NO.	HSG SIZE	LOADED CKTS	WITH RIBS	WITH SHUNT	TOOLED
95052-2881	8	8	NO	NO	NO
95052-2885	8	8	NO	YES	NO
95052-2886	8	8	YES	YES	NO
95052-2887	8	8	YES	NO	YES



PRE-RELEASE  
REFERENCE  
USE ONLY

THIRD ANGLE PROJECTION		REVISE ONLY ON CAD SYSTEM		SH.	REV.
ECN MG 1998-2638 98-01-26 Er	REVISIONS FOR PREVIOUS REVISIONS SEE MRI LIST	UNLESS OTHERWISE SPECIFIED TOLERANCES: ANGULAR ± 2° INCH METRIC	DRWG BY MA	SIGN	CAD/CAM PROJECT NAME S95052X1 DGN
		3 PLACE ± .010 ± 2 PLACE ± .014 ± 0.25 1 PLACE ± ± 0.35	CHK'D BY CB	SIGN	TITLE TOP ENTRY SHIELDED AND SHUNTED JACK W.E. TYPE
		DRAFT WHERE APPLICABLE MUST REMAIN WITHIN DIMENSIONS	APP'D BY JB	SIGN	MOLEX EUROPE SHEET NO. DATE 1 OF 1 92/04/28
		DESIGN DIMENSION <input checked="" type="checkbox"/> MM <input type="checkbox"/> IN. EQUIVALENT DIMENSION <input type="checkbox"/> MM <input checked="" type="checkbox"/> IN.	SCALE 5:1	PART NO. SEE CHART	DWG NO. SDA 95052