



9mm Size Metal Shaft Multi-ganged Type RK097 Series

Single-shaft with rotary switch type

Part number	RK0971111Z32
-------------	---------------------

Number of resistor elements	Single-unit
-----------------------------	-------------

Mounting direction	Horizontal type
--------------------	-----------------

Fixing method of bushing	Screw
--------------------------	-------

Shaft types	Flat
-------------	------

Length of the shaft	15mm
---------------------	------

Center detent	Without
---------------	---------

Total resistance	50k Ω
------------------	--------------

Resistance taper	15A
------------------	-----

Operating temperature range	-20°C to +70°C
-----------------------------	----------------

Electrical Performance	Total resistance tolerance	$\pm 20\%$
---------------------------	----------------------------	------------

Rated power	0.05W
-------------	-------

Maximum operating voltage	50V AC, 10V DC
---------------------------	----------------

Residual resistance	50 Ω max.
---------------------	------------------

Insulation resistance	100M Ω min. 250V DC
-----------------------	----------------------------

Voltage proof	300V AC for 1 minute
---------------	----------------------

Mechanical Performance	Total rotational angle	300° $\pm 5^\circ$
---------------------------	------------------------	--------------------

Rotational torque	2 to 25mN·m
-------------------	-------------

Stopper strength	0.5N·m
------------------	--------

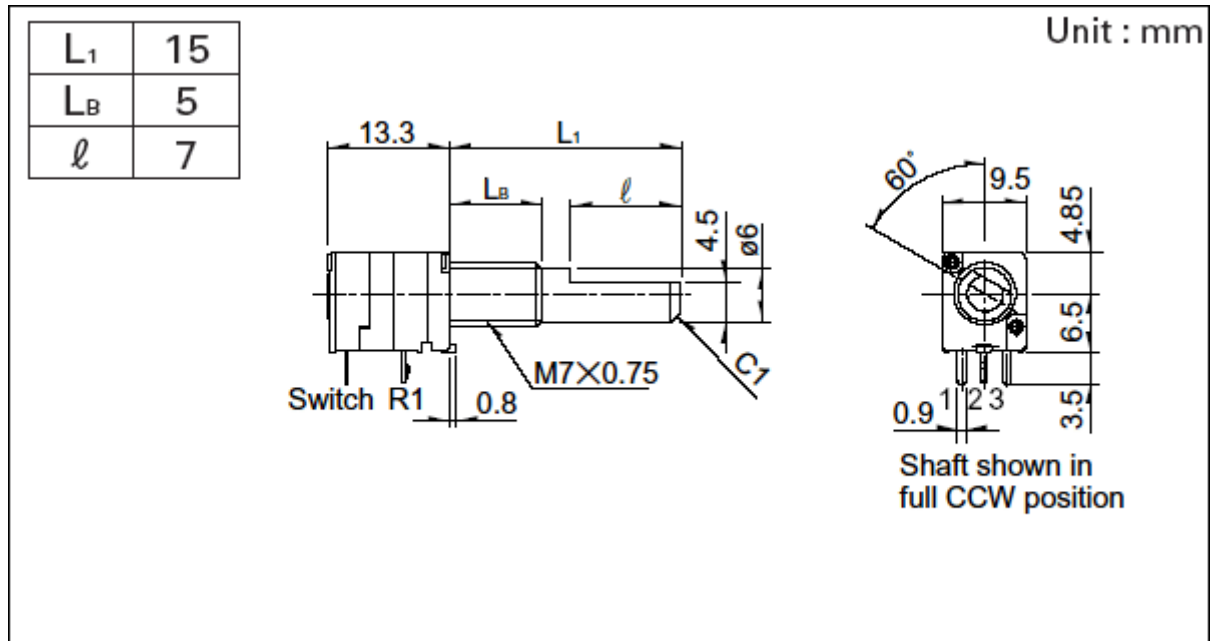
Push-pull strength	100N max.
--------------------	-----------

	Vibration	10 to 55 to 10Hz/min., the amplitude is 1.5mm for all the frequencies, in the 3 direction of X, Y and Z and for 2 hours respectively
Durability	Operating life	15,000 cycles
Specifications switches	Contact arrangement	Single pole and single throw
	Changeover angle	50° max.
	Changeover force	50mN·m max.
	Operating life	10,000 cycles
	Ratings	3A 16V DC (10mA 16V DC min. rating)
	Contact resistance	100mΩ for initial period, 200mΩmax. after operating life.
	Insulation resistance	100MΩ min. 250V DC
	Voltage proof	300V AC for 1 minute
Minimum order unit (pcs.)	Japan	700
	Export	1,400

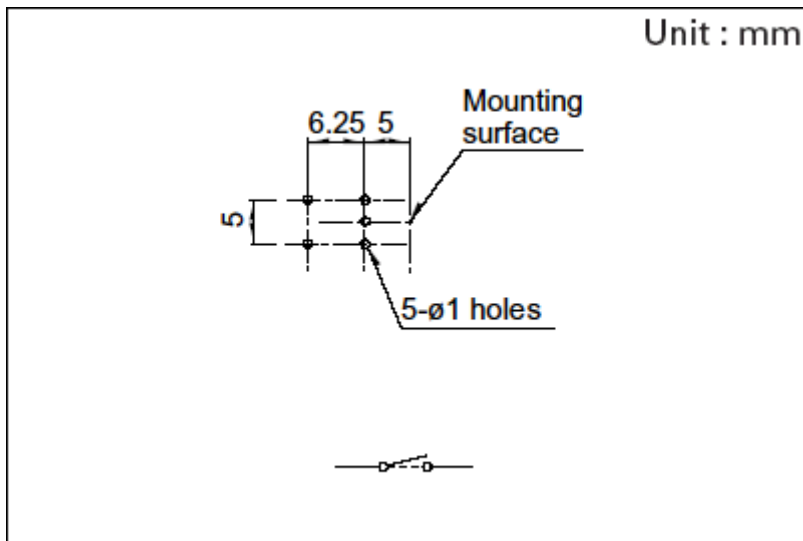
Photo



Dimensions

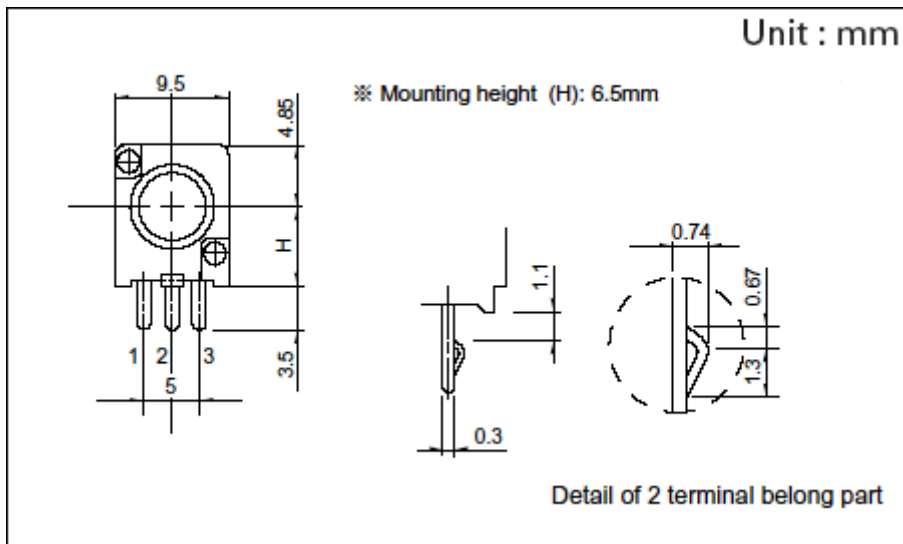


Mounting Hole Dimensions

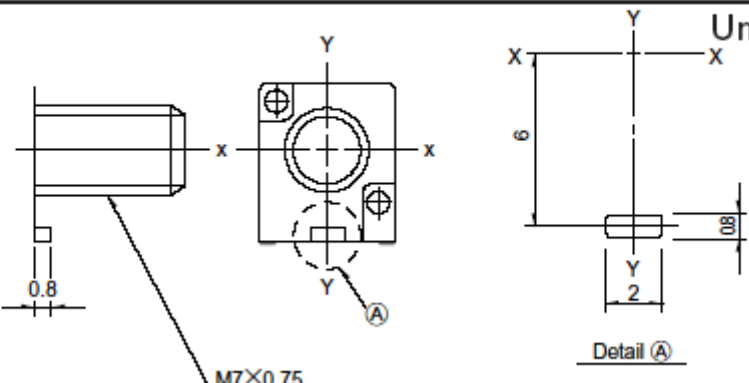


Viewed from mounting side.

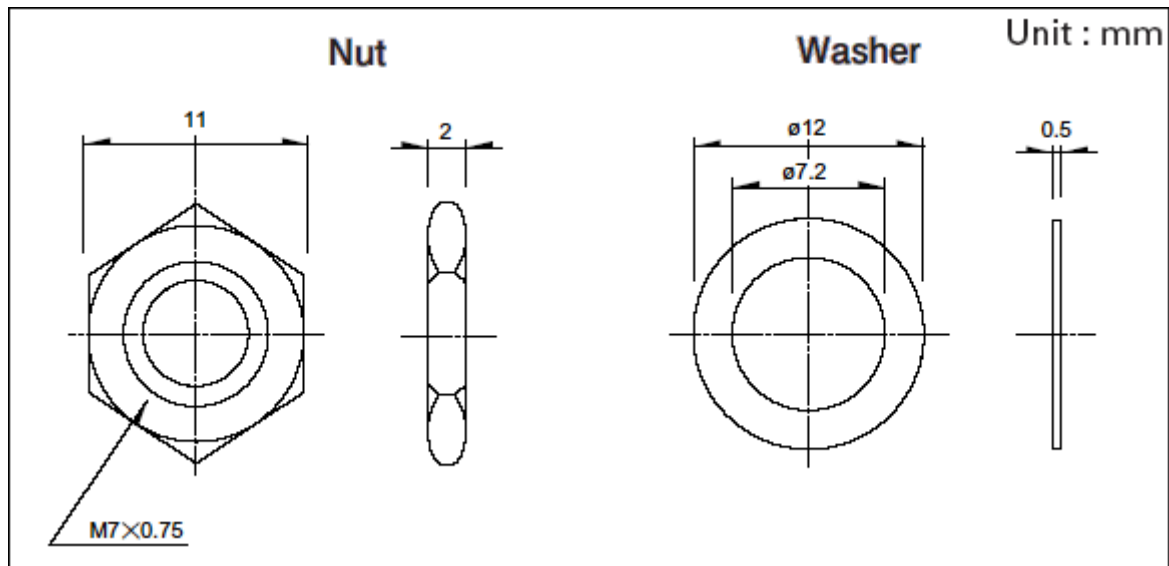
Dimensions of Terminal



Dimensions of Bushings

Bushing	M7
Dimensions	<p>Unit : mm</p>  <p>M7X0.75</p>

Attached Parts



These parts are attached to the following products.

Packing Specifications

Tray

Number of packages (pcs.)	1 case / Japan	700
	1 case / export packing	1,400
Export package measurements (mm)		373×540×181

Soldering Conditions

Reference for Dip Soldering

Preheating	Soldering surface temperature	100°C max.
	Heating time	2 min. max.
Dip soldering	Soldering temperature	260±5°C max.
	Soldering time	5±1s
No. of solders		2 time max.

Reference for Hand Soldering

Tip temperature		350°C max.
Soldering time		3s max.
No. of solders		1 time

Notes are common to this series/models.

1. This site catalog shows only outline specifications. When using the products, please obtain formal specifications for supply.
2. For the switch attached, the single-shaft or inner shaft of the dual-shaft type can be chosen.
3. Please place purchase orders per minimum order unit (integer).
4. Products other than those listed in above products are also available. Please contact us for details.
5. This products can be used in vehicles.
Although these products are designed to perform over a wide operating temperature range, please ensure that you receive and read the formal delivery specifications before use.