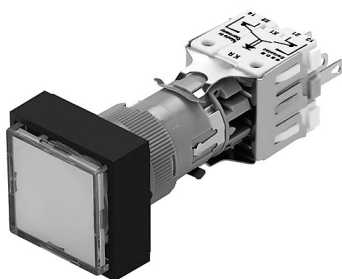


EAO – Your Expert Partner for Human Machine Interfaces

902-.000-0P - Illuminated pushbutton actuator maintained square, Var. 2

902-.000-0P - Illuminated pushbutton actuator maintained square, Var. 2



Attention: The preview is based on a sample product. This can differ from your current configuration.

Mounting

Behind panel depth	52 mm
Mounting cut-out	Ø 16 mm
Design	raised

Front

Front dimension	24 mm x 24 mm
Front shape	square

Other Attributes

Weight	0,014 kg
--------	----------

Operating-/Indication part

Lens illumination	illuminative
-------------------	--------------

IP-Rating

Front protection	IP40
------------------	------

Connection Method

Terminal	PCB
----------	-----

Actuator

Switching action	
Housing colour	grey
Housing material	Plastic

Switching element

Switching system	Snap-action switching element
Contacts	2 NC + 2 NO
Switching current	5 A
Contact material	
Switching voltage	250 V AC

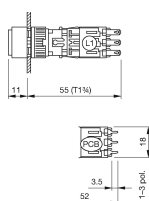
Function

Illuminated pushbutton	
------------------------	--

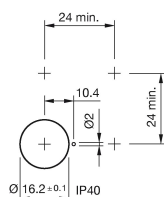
EAO – Your Expert Partner for Human Machine Interfaces

902-.000-0P - Illuminated pushbutton actuator maintained square, Var. 2

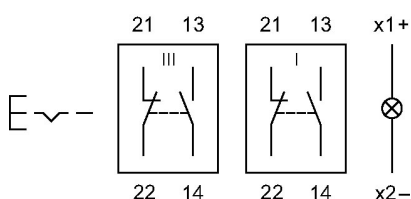
Dimensions



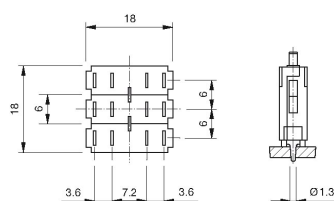
Mounting cut-outs



Wiring diagram



Component layout



Additional information

Protection degree IP 40/IP 65 is determined by front bezel and lens
Maintain to momentary action is switchable, reversible

Legend

Contacts: NC = Normally closed, NO = Normally open
Switching action: B = Momentary, C = Maintained