

Product description

Contacts: 6+PE, female panel mount connector, central locking, screw clamp termination, PG 9

Area

RD24 Power Series 692/693

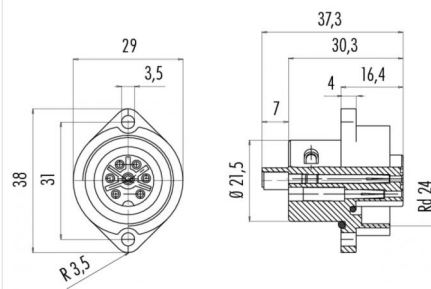
Order number

09 4220 00 07

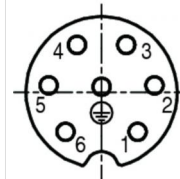
Illustration



Scale drawing

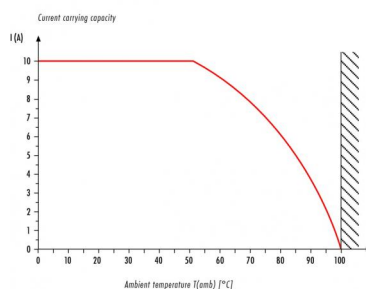


Contact arrangement



	X	Y
1	3,25	-3,54
2	4,76	0,63
3	2,22	4,26
4	-2,22	4,26
5	-4,76	0,63
6	-3,25	-3,54
PE	0,00	0,50

Derating curve



You can find the assembly instructions on the next page.

Technical data

General values

Connector design	female panel mount connector
Connector locking system	bolted
Termination	screw clamp
Wire gauge (mm)	max. 1,5 mm ²
Wire gauge (AWG)	max. 16
Upper limit temperature	100 °C
Lower limit temperature	-40 °C

Cable data

Approval 1	UL
Approval 2	ESTI+
Approval 3	VDE

Electrical values

Rated current (40 °C)	10 A (8 A UL)
Rated voltage	250 V
Rated impulse voltage	4000 V
Pollution degree	3
Overvoltage category	III
Insulating material group	III
Volume resistivity	≤ 5 mΩ
Insulation resistance	≥ 10 ¹⁰ Ω
EMC compliance	Shielding is not possible
Degree of protection	IP67
Mechanical operation	> 500 Mating cycles

Material

Contact material	CuSn (bronze)
Contact plating	Ag (silver)
Contact body material	PBT

Product description

Contacts: 6+PE, female panel mount connector, central locking, screw clamp termination, PG 9

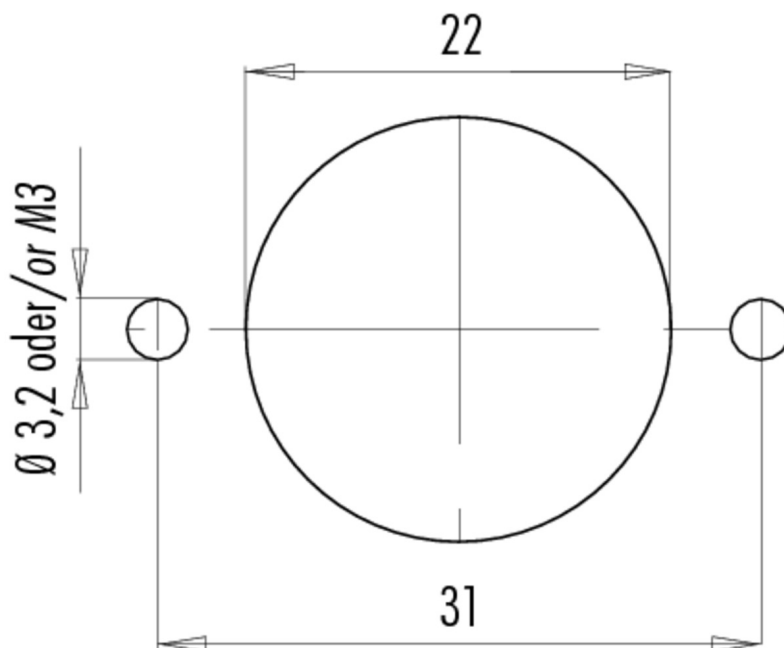
Area

RD24 Power Series 692/693

Order number

09 4220 00 07

Assembly instructions / Panel cut-out



Product description	Contacts: 6+PE, female panel mount connector, central locking, screw clamp termination, PG 9
Area	RD24 Power Series 692/693
Order number	09 4220 00 07

Security notices

The connector must not be connected or separated under load. Non-observance and incorrect use can result in personal injury.

The connectors are designed for use in plant, control system and electrical equipment. The end user is responsible for checking whether the connectors are suitable for use in other applications.

Connectors with degree of protection IP 67 and IP 68 are not suitable for use under water. When used outdoors, the connectors must be separately protected against corrosion. For further information about IP degrees of protection refer to 'Technical support' in the Download Centre.