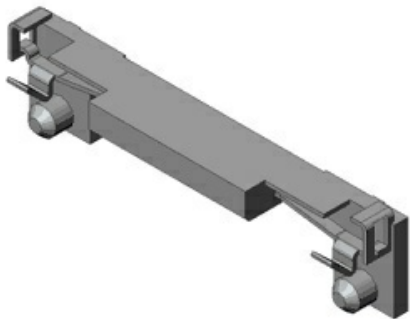










MM60-EZH039-B5-R850

Product Details



Part Number	MM60-EZH039-B5-R850
Status	Active
Features	PCI Express Mini Card compatible connector, Latch
Number of Contacts	-
Connector Type	Latch
Connector Style	
Termination Style	Soldering (SMT)
Material of Contact	Stainless steel
Contact Finish	Tin plating
Material of Insulator	Heat resistant material (UL94V-0)
Mounted Height (mm)	
Key Position	
With Polarizing Boss	TRUE
Combination	MM60-52B1-B1-R850,MM60-52B1-G1-R850,MM60-76B2-G1-R1000

Documents	<div>Catalog </div> <div>Drawings </div> <div>Drawings </div> <div>Specifications </div> <div>3D Models </div> <div>PDF Download </div>
Stock Search	<div>Stock Search </div>
RoHS compliant	10 substances (2011/65/EU)
REACH compliant	201 substances (16/07/2019)
Issue of Certificates	<div>Issue of Certificates </div>
Combination	MM60-52B1-B1-R850
Remarks	Embossed tape packaging (850 pieces/reel)

Notice

1. The values specified in this web site are only for reference. The products and their specifications are subject to change without notice. Contact our sales staff for further information before considering or ordering any of our products.
For purchase, a product specification must be agreed upon.
2. Users are requested to provide protection circuits and redundancy circuits to ensure safety of the equipment, and sufficiently review the suitability of JAE's products to the equipment.
3. The products presented in this web site are designed for the uses recommended below.
We strongly suggest you contact our sales staff when considering use of any of the products in any other way than the recommended applications or for a specific use that requires an extremely high reliability.
(1) Applications that require consultation:

* Please contact us if you are considering use involving a quality assurance program that you specify or that is peculiar to the industry, such as:

Automotive electrical components, train control, telecommunications devices (mainline), traffic light control, electric power, combustion control, fire prevention or security systems, disaster evention equipment, etc.

* We may separately give you our support with a quality assurance program that you specify, when you think of a use such as :

Aviation or space equipment, submarine repeaters, nuclear power control systems, medical equipment for life support, etc.

(2) Recommended applications include:

* Computers, office appliances, telecommunications devices (terminals, mobile units), measuring equipment, audiovisual equipment, home electric appliances, factory automation equipment, etc