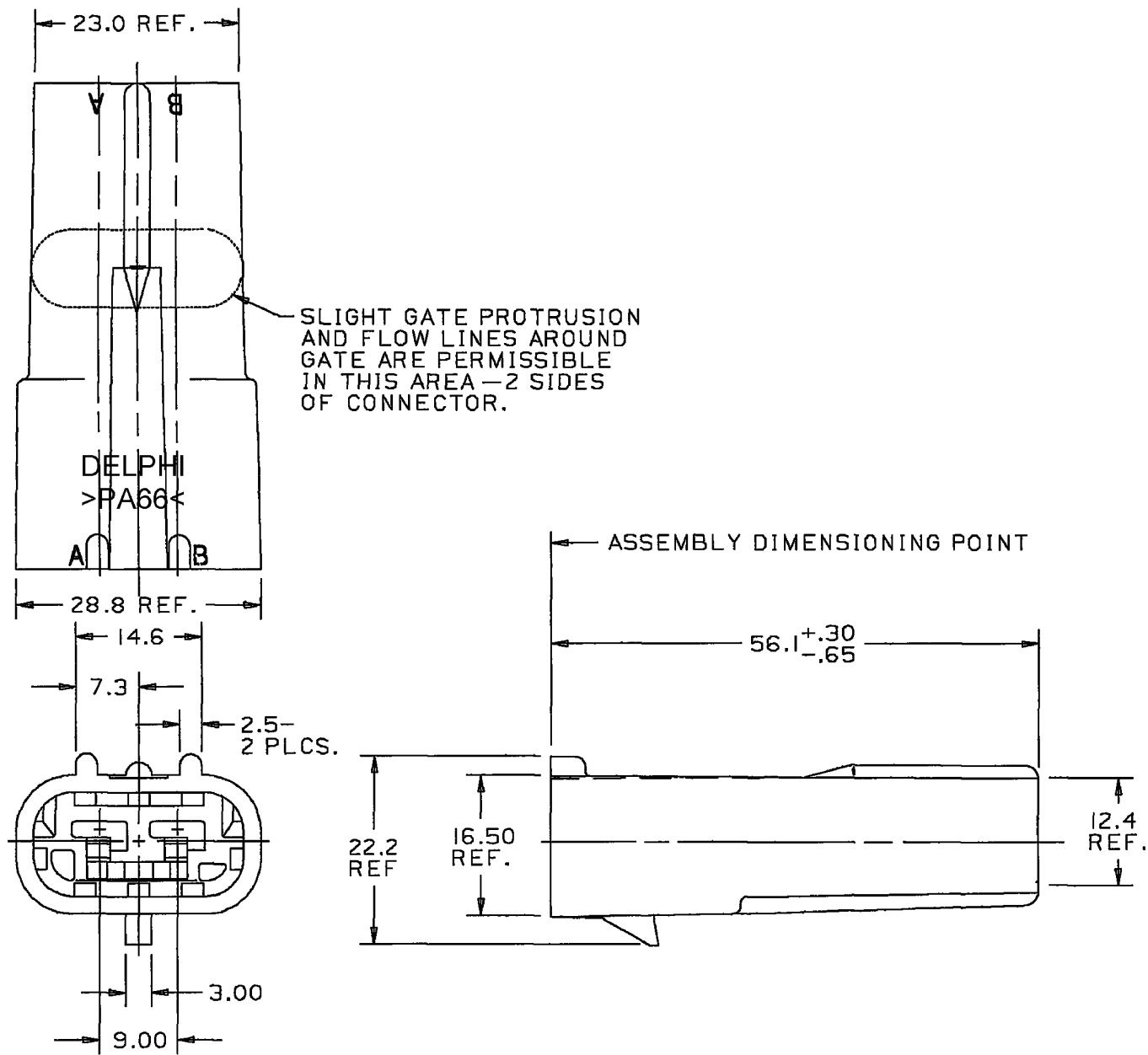


DWG STATUS				ZONE	REVISION HISTORY	AUTH	DR	APVD	APVD
DATE	STG	REV	N/P						
30MY02	R	J4	-	-	CLEARED REV COL; MAT'L SPEC WAS R0071754, ADDED LOGO NOTE & RECYCLING CODE NOTE	225854	RH	RH	ET



- NOTES** —1. CAVITIES TO ACCEPT I2066493 TERMINAL OR EQUIV.
2. CAVITIES TO ACCEPT I2034364 TWO WAY CABLE SEAL.
3. CONNECTOR TO ACCEPT I2034363 SECONDARY LOCK.
4. MATING CONNECTOR/SEAL ASSEMBLY—I2033769.
5. SEALING CODE 3.
6. (2.3) X (0.1) RAISED DELPHI CORPORATE BRAND TO BE LOCATED ON ANY EXTERIOR SURFACE, PREFERABLY VISIBLE AT FINAL ASSEMBLY. OPTIONAL CONSTRUCTION TO BE "PED" OR NO LOGO.
7. MATERIAL RECYCLING CODE >PA66< PER SAE J1344. (2.3) X (0.1) RAISED CHARACTERS AS SHOWN TO BE LOCATED ON ANY EXTERIOR SURFACE. OPTIONAL CONSTRUCTION TO BE NO MATERIAL RECYCLING CODE.

TOLERANCE UNLESS
OTHERWISE SPECIFIED:
DECIMAL:
ONE PLACE ± 0.3
TWO PLACE ± 0.15
ANGULAR ± 2°

DWG TYPE		PART DRAWING	
STYLE			
VOLUME (CM ³)	DISTR CODE		
ROUTING	6901		
UNLESS OTHERWISE SPECIFIED <small>THIS DOCUMENT IS IN ACCORDANCE WITH ASME Y14.5M-1994, AS AMENDED BY THE 2D GLOBAL DIMENSIONING AND TOLERANCING ADDENDUM - 1997. ALL GEOMETRIC TOLERANCES AND RELATED DATUMS APPLY PPS. SIZE #1 PERFECT FORM AT PMD. DOES NOT APPLY WHEN RELATIONSHIP BETWEEN FEATURES IS ESTABLISHED BY ORIENTATION OR LOCATION TOLERANCES. SEPARATE POSITION CALCULATIONS MAY BE GAGED SEPARATELY REGARDLESS OF DATUM REFERENCES.</small>			
REFERENCE			
		DO NOT SCALE	

DELPHI			
DELPHI PACKARD ELECTRIC SYSTEMS WARREN, OH			
DR J. KRAUSE		DATE 22DE86	
APVD1 F. HESTON		06JA87	
APVD2 B. SERBIN		06JA87	
APVD3 J. DAUGHERTY		06JA87	
APVD4			
APVD5			
SUBSTANCES OF CONCERN AND RECYCLED CONTENT PER DELPHIA 10846001			
MATERIAL M3592001 PA66 HS IM BLK			
DRAWING NAME CONN 2M M/P 630			
DRAWING NUMBER 12034269			
SIZE A1	SCALE 2:1	FRAME NO 1 OF 1	SHEET NO 1 OF 1
STG R	REV J4	N/P -	