


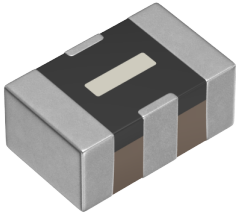




Applications	 Commercial Grade
Feature	 For Signal Line
Series	MEM
Status	 Production



Size	
Length(L)	2.00mm ±0.20mm
Width(W)	1.25mm ±0.20mm
Thickness(T)	0.85mm ±0.15mm

Electrical Characteristics	
Insertion Loss [Typ.]	20dB (200MHz to 2GHz)
Cut-Off Frequency [Typ.]	10MHz
Rated Voltage [Max.]	12V
Rated Current [Max.]	200mA
DC Resistance (Max.)	
Rated Capacitance [Typ.]	90pF

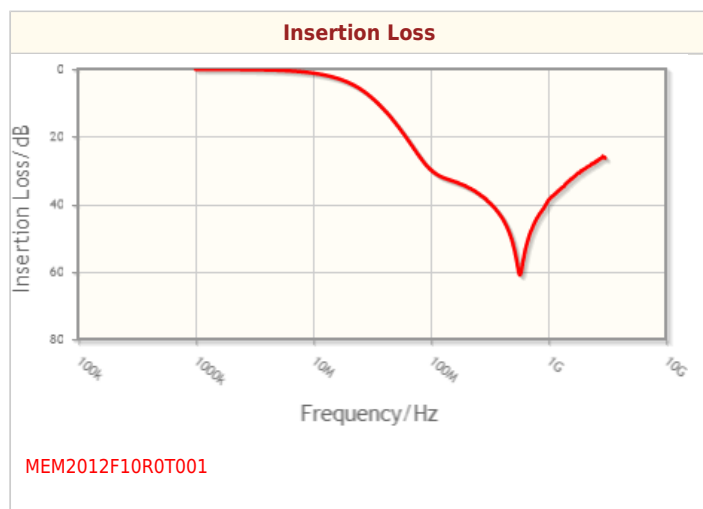
Other	
Circuit Type	Pi Type
Transmission Line	Single-ended
Operating Temp. Range	-40 to 85°C
Soldering Method	Reflow Iron Soldering
AEC-Q200	No
Packing	Punched (Paper)Taping [180mm Reel]
Package Quantity	4000pcs
Weight	0.008g

! Images are for reference only and show exemplary products.
! This PDF document was created based on the data listed on the TDK Corporation website.
! All specifications are subject to change without notice.

MEM2012F10R0T001



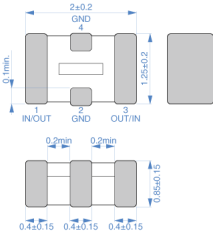
Characteristic Graphs(This is reference data, and does not guarantee the products characteristics.)





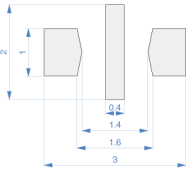
Associated Images

Shapes and Dimensions



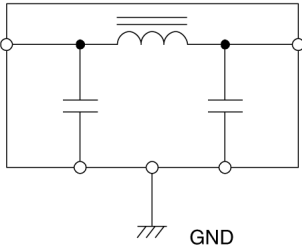
Dimensions in mm

Land Pattern (Terminal Connection)



Dimensions in mm

Circuit Diagram



! Images are for reference only and show exemplary products.
 ! This PDF document was created based on the data listed on the TDK Corporation website.
 ! All specifications are subject to change without notice.