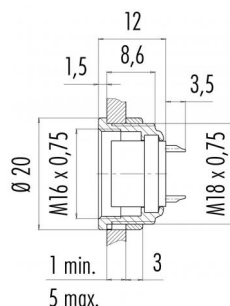


Product description	M16 IP40 female panel mount connector, Contacts: 24, unshielded, solder, IP40
Area	M16 IP40 series 680
Order number	09 0198 00 24

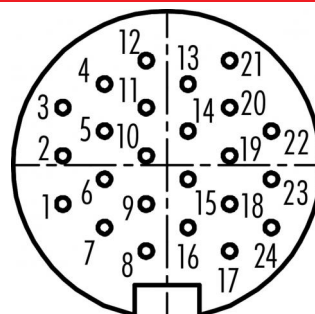
### Illustration



### Scale drawing



### Contact arrangement (Plug-in side)



You can find the assembly instructions on the next page.

## Technical data

### General features

Order number	09 0198 00 24
Connector design	female panel mount connector
Version	connector female straight screw solder
Connector locking system	IP40
Termination	0.14 mm <sup>2</sup> / AWG 26
Degree of protection	-40 °C / 85 °C
Cross-sectional area	> 500 Mating cycles
Temperature range from/to	9.445
Mechanical operation	85369010
Weight (g)	
Customs tariff number	

### Material

Housing material	Zinc die-cast nickel-plated
Contact body material	PBT (UL94 V-0)
Contact material	CuSn (bronze)
Contact plating	Au (gold)
REACH SVHC	CAS 7439-92-1 (Lead)

### Classifications

eCl@ss 11.1	27-44-01-09
ETIM 7.0	EC003569

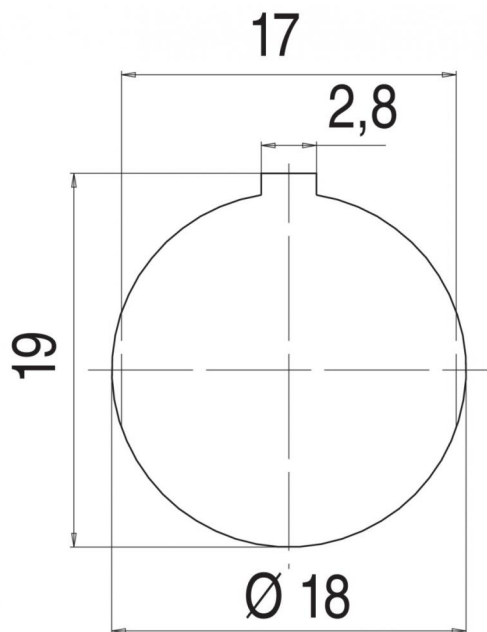
### Electrical parameters

Rated voltage	60 V
Rated impulse voltage	500 V
Rated current (40 °C)	1 A
Insulation resistance	≥ 10 <sup>10</sup> Ω
Pollution degree	1
Overvoltage category	I
Insulating material group	III
EMC compliance	unshielded

Product description M16 IP40 female panel mount connector, Contacts: 24, unshielded, solder, IP40

Area M16 IP40 series 680  
Order number 09 0198 00 24

Assembly instructions / Panel cut-out



Product description	M16 IP40 female panel mount connector, Contacts: 24, unshielded, solder, IP40
Area	M16 IP40 series 680
Order number	09 0198 00 24

## Security notices

The connectors have been developed for applications in plant engineering, control and electrical equipment construction. The user is responsible for checking whether the connectors can also be used in other areas of application.