

DEUTSCH HDP20 RECEPTACLE PROTECTIVE CAPS



DEUTSCH | DEUTSCH HDP
[View on TE.com >](#)

DEUTSCH HDP20 receptacle protective caps are available for sizes 18 and 24 shell HDP20 receptacles.



Connectors > Automotive Connectors > Automotive Connector Accessories > Automotive Connector Caps & Covers

DEUTSCH HDP20 receptacle protective caps provide an environmentally sealed interface for unmated HDP20 receptacles. They help prevent moisture and dirt from contaminating the unmated connectors.



Protection & Strain Relief Accessory Type: **Dust Cap**
Strain Relief: **Without**
Primary Product Color: **Black**
Primary Product Material: **PA GF**
Connector System: **Wire-to-Wire**

[VIEW ALL DEUTSCH HDP20 PRODUCTS](#)

[VIEW ALL DEUTSCH HDP20 PRODUCTS](#)

DEUTSCH HDP20 connectors are heavy-duty, environmentally sealed, composite shell, multi-pin connectors.

Features

Product Type Features

Protection & Strain Relief Accessory Type	Dust Cap
Connector System	Wire-to-Wire
Sealable	Yes



Connector & Contact Terminates To

Wire & Cable

Configuration Features

Number of Positions	6, 7, 8, 9, 14, 16, 18, 19, 20, 21, 23, 29, 31, 33, 35, 47
---------------------	--

Body Features

Primary Product Color	Black
Primary Product Material	PA GF

Mechanical Attachment

Strain Relief	Without
---------------	---------

Usage Conditions

Operating Temperature (Max) (°C)	125
Operating Temperature (Max) (°F)	257
Operating Temperature Range (°C)	-55 - 125
Operating Temperature Range (°F)	-67 - 257

Industry Standards

Degree of Protection	IP6K9K, Not Tested
UL Flammability Rating	UL 94V-0

Packaging Features

Packaging Quantity	1
Packaging Method	Box

Other

Serviceable	Yes
-------------	-----

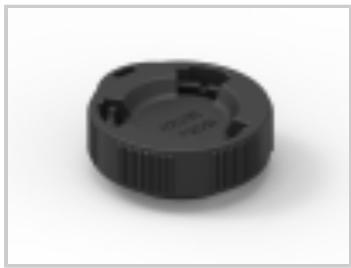
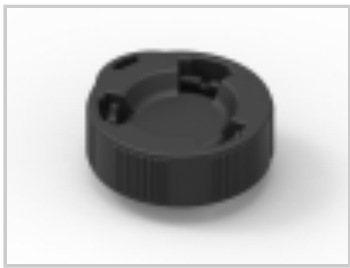
Reference Number

TE Internal Number	CAT-H396-RC8382
--------------------	-----------------

SEE PRODUCTS ON NEXT PAGE



Products (1 of 1)



DUST CAP, 18SZ, REC, BLK, HDP

DUST CAP, 24SZ, REC, BLK, HDP

TE Part #	HDC26-18	HDC26-24
Number of Positions	6, 8, 14, 20, 21	7, 9, 14, 16, 18, 19, 21, 23, 29, 31, 33, 35, 47
EU RoHS Directive 2011/65/EU	EU RoHS Compliant	EU RoHS Compliant
EU ELV Directive 2000/53/EC	EU ELV Compliant	EU ELV Compliant
Product Families	DEUTSCH	DEUTSCH
Series	DEUTSCH HD,DEUTSCH HDP	DEUTSCH HD,DEUTSCH HDP

*EU RoHS Directive 2011/65/EU

These products comply with the substance restrictions of the Restriction on Hazardous Substances Directive 2011/65/EU (RoHS2). The RoHS2 Directive requires that certain electrical and electronic equipment products do not contain mercury, cadmium, hexavalent chromium, PBB, PBDE, lead, DEHP, BBP, DBP and DIBP above defined thresholds. Products indicated as 'Compliant' do not contain any of these substances above the prohibition thresholds. Finished electrical and electronic equipment products will be CE marked as required by the Directive. Components may not be CE marked.

**EU ELV Directive 2000/53/EC

These products comply with the substance restrictions of the End of Life Vehicles Directive 2000/53/EC (ELV). The ELV Directive requires that materials and components of vehicles do not contain mercury, cadmium, hexavalent chromium, and lead above defined thresholds. Products indicated as 'Compliant' do not contain any of these substances above the prohibition thresholds.



Related Materials

Flipbook Catalog

Industrial & Commercial Transportation - Terminals and Connectors (English)

TE's Industrial & Commercial Transportation Terminals and Connectors flipbook catalog features AMPSEAL, AMPSEAL 16, Circular DIN, DEUTSCH, HDSCS, LEAVYSEAL, and Superseal 1.0 connectors, contacts, tools, and accessories.
English

Product Specifications

DEUTSCH HDP20 Connectors Product Specifications (English)

This specification covers performance tests and quality requirements for DEUTSCH HDP20 connectors.
English

Connector Selector

Connector Selector (English)

The Connector Selector is a reference guide to TE Connectivity's (TE) Industrial & Commercial Transportation electrical connectors.
English

Also in the Series | DEUTSCH HDP



Automotive Connector Caps & Covers
(12)



Automotive Housings(289)



Insertion & Extraction Tools(12)



Other Automotive Connector
Accessories(5)

DEUTSCH, TE Connectivity, and TE connectivity (logo) are trademarks.