

SPECIFICATIONS:

ELECTRICAL:

INSULATOR RESISTANCE:	5 G OHMS Min.
DIELECTRIC WITHSTANDING:	1,000VAC r.m.s.
OPERATING TEMPERATURE:	-55° C ~ +125° C
POWER CONTACT RESISTANCE:	1.0 mOHMS Max.
SIGNAL CONTACT RESISTANCE:	2.7 mOHMS Max.
POWER PINS:	SEE PART NUMBER BELOW
SIGNAL PINS:	5 AMPS

MECHANICAL:

CONTACT INSERTION FORCE:	4.5 Kg Max.
CONTACT SEPARATOR FORCE:	0.3Kg Min.

MATERIALS:

CONTACTS:	COPPER ALLOY
INSULATOR:	PBT UL94V-0 RATED, BLK
	230°C PROCESS TEMP.
SHELL:	STEEL
SEAL:	F04 FLEXIBLE ADHESIVE

FINISH:

SHELL:	NICKEL
CONTACTS:	FULL GOLD FLASH

680S13W3203L YY1

2 = 20 AMP
4 = 40 AMP

0 = NO HARDWARE

1 = GOLD FLASH

*CONTACT NORCOMP FOR MORE OPTIONS

MEETS IP67 STANDARDS

(SEE PAGE 2 FOR SEALING DETAILS)

RoHS COMPLIANT



THESE DRAWINGS AND SPECIFICATIONS ARE THE PROPERTY OF NorComp AND SHALL NOT BE REPRODUCED, COPIED OR USED AS THE BASIS FOR THE MANUFACTURE OR SALE OF APPARATUS WITHOUT WRITTEN PERMISSION.

DRAWN:

P. JENKINS

DATE:

09/13/2011

UNITS = inch [mm]

DO NOT SCALE FROM DRAWING

NorComp

SCALE:

NTS

SHEET

OF

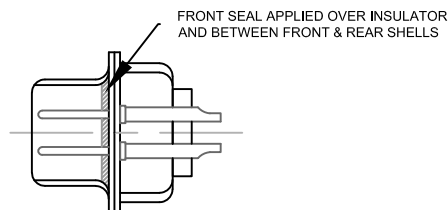
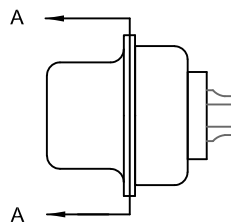
1 2

REV

1

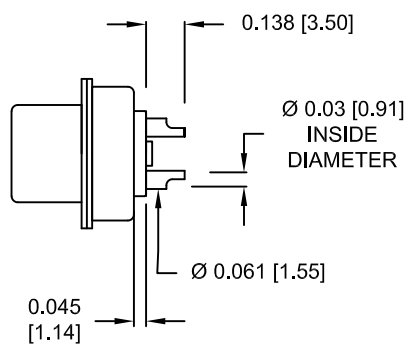
DWG NO.

680S13W3203L YY1

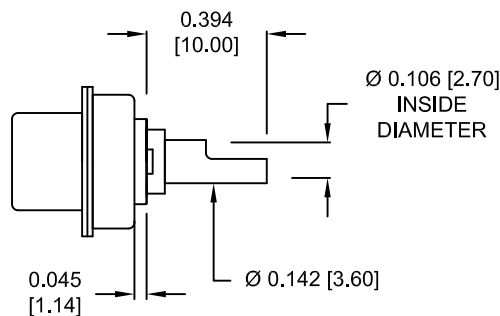


DETAIL A-A
SHOWN FOR REFERENCE ONLY

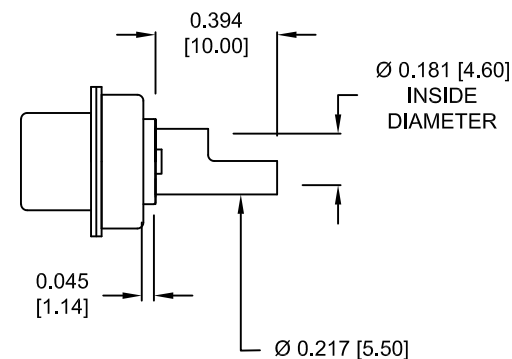
NOTE:
SIGNAL AND POWER CONTACTS
COME PRE-LOADED INTO INSULATORS



SIGNAL CONTACTS
ACCEPTS UP TO 20 AWG WIRE



20 AMP POWER CONTACTS
ACCEPTS UP TO 12 AWG WIRE



40 AMP POWER CONTACTS
ACCEPTS UP TO 8 AWG WIRE

RoHS COMPLIANT



THESE DRAWINGS AND SPECIFICATIONS ARE THE PROPERTY OF NorComp AND SHALL NOT BE REPRODUCED, COPIED OR USED AS THE BASIS FOR THE MANUFACTURE OR SALE OF APPARATUS WITHOUT WRITTEN PERMISSION.

DRAWN:
P. JENKINS
DATE:
09/13/2011

UNITS = inch [mm]

NorComp

DO NOT SCALE FROM DRAWING

SCALE:
NTS

SHEET 2 OF 2

REV 1

DWG NO.

680S13W3203LYY1