

16

1613 14

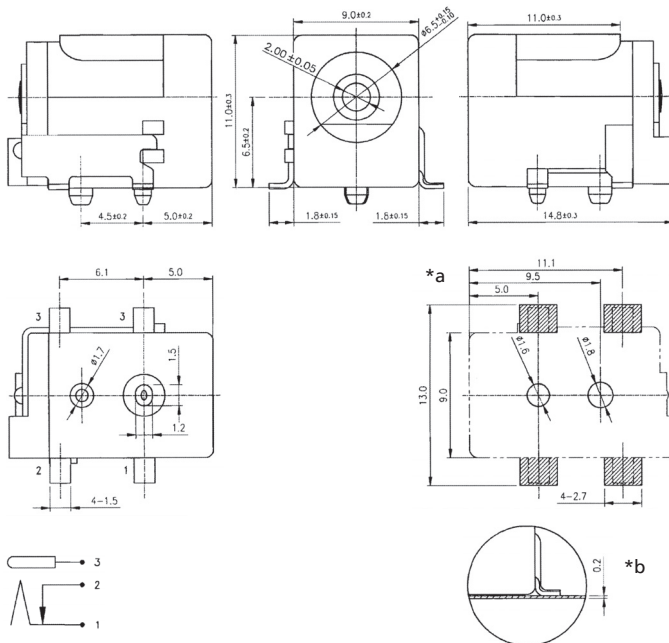
Power supply connectors



Power supply chassis socket, angular version, with break contact, for printed circuit boards, surface mounting technology (SMT)

16

1613 14



*a printed circuit board layout, components side view

*b coplanarity

Environmental conditions

Temperature range -25 °C/+85 °C

Materials

Insulating body PA, V-0 according to UL94
Contact CuZn/CuSn, silver-plated

Mechanical data







Diameter opening 6,5 mm
Diameter center pin 2,0 mm
Mating cycles ≥ 5000
Insertion force 1,96–19,6 N¹
Withdrawal force 1,96–19,6 N¹

¹ measured with a gauge plug

Electrical data (at T_{amb} 20 °C)

Contact resistance $\leq 30 \text{ m}\Omega$
Rated current 2,5 A
Rated voltage 13,5 V DC
Rated impulse voltage 500 V/60 s
Insulation resistance $\geq 100 \text{ M}\Omega$

Associated products

Counterparts
 1633 02  1633 03  NES/J 21
 NES/J 21 W  NES/J 210  XNES/J 210

16

1613 14

Designation	Pole Number	PU (Pieces)	MDQ (Pieces)
1613 14 VP3	2	350	350

Packaging:

on reel