

Product data sheet

Miniature connectors

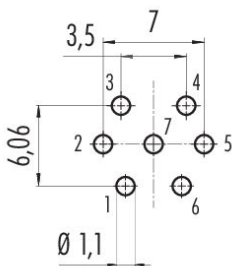


Product description	M16 Male panel mount connector, Contacts: 7 (07-a), unshielded, THT, IP40, front fastened
Area	M16 IP40
Part no.	09 0327 90 07

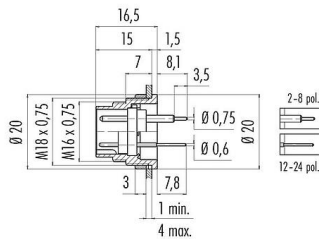
Illustration



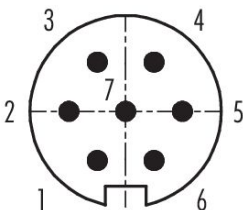
Conductor layout



Scale drawing



Contact arrangement (Plug-in side)



You can find the component part drawing and assembly instructions on the next page.

Technical data

General features

Part no.	09 0327 90 07
Connector design	Male panel mount connector
Type standard	DIN EN 61076-2-106
Version	Connector pin straight
Connector locking system	screw
Termination	THT
Degree of protection	IP40

# Product data sheet

## Miniature connectors



Product description	<b>M16 Male panel mount connector, Contacts: 7 (07-a), unshielded, THT, IP40, front fastened</b>
Area	<b>M16 IP40</b>
Part no.	<b>09 0327 90 07</b>

Temperature range from/to	-40 °C / 85 °C
Mechanical operation	> 500 Mating cycles
Weight (g)	12.51
Customs tariff number	85369010
Country of Origin	DE

### Electrical parameters

Rated voltage	125 V
Rated impulse voltage	800 V
Rated current	5.0 A
Insulation resistance	$\geq 10^{10} \Omega$
Pollution degree	1
Overvoltage category	I
Insulating material group	III
EMC compliance	unshielded

### Material

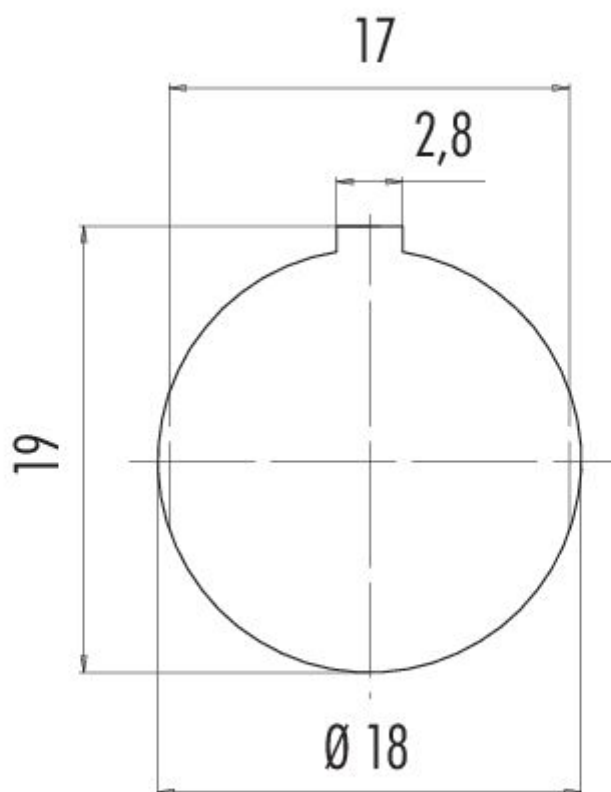
Housing material	Zinc die-cast nickel-plated
Contact body material	PBT (UL94 V-0)
Contact material	CuZn (brass)
Contact plating	Ag (silver)
REACH SVHC	CAS 7439-92-1 (Lead)
SCIP number	367927d0-3afb-4865-ac88-e8f4f691723e

### Classifications

eCl@ss 11.1	27-44-01-09
ETIM 9.0	EC003569

Product description	M16 Male panel mount connector, Contacts: 7 (07-a), unshielded, THT, IP40, front fastened
Area	M16 IP40
Part no.	09 0327 90 07

### Assembly instructions / Panel cut-out



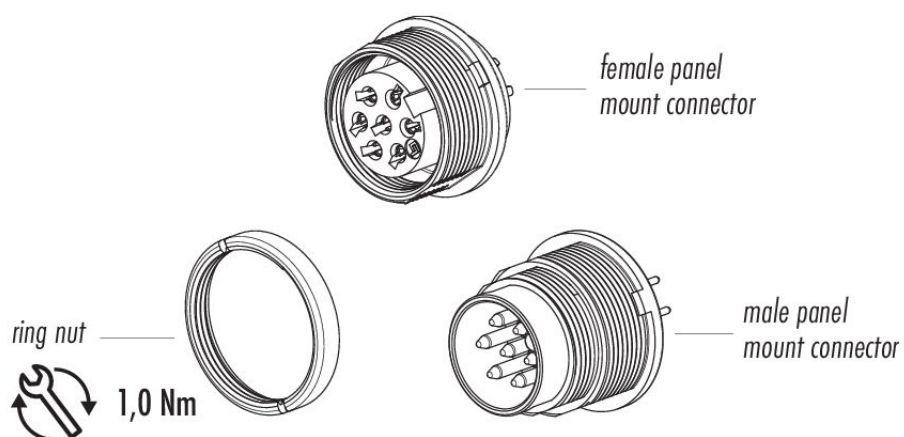
# Product data sheet

## Miniature connectors



Product description	<b>M16 Male panel mount connector, Contacts: 7 (07-a), unshielded, THT, IP40, front fastened</b>
Area	<b>M16 IP40</b>
Part no.	<b>09 0327 90 07</b>

### Component part drawing



Product description	<b>M16 Male panel mount connector, Contacts: 7 (07-a), unshielded, THT, IP40, front fastened</b>
Area	<b>M16 IP40</b>
Part no.	<b>09 0327 90 07</b>

### **Security notices**

The connector must not be plugged or unplugged under load. Non-observance and improper use can result in personal injury.

The connectors have been developed for applications in plant engineering, control and electrical equipment construction. The user is responsible for checking whether the connectors can also be used in other areas of application.

To protect against unintentional opening of the connector, the thread between the housing and the connector head must be secured with a suitable cyanoacrylate adhesive when used in circuits with voltages dangerous to the touch. This does not apply to connectors used in SELV and PELV circuits according to IEC 61140 (EN 61140, VDE 0140-1).