

ORDERING CODE: M USBR - M5C1 - XX

SERIES, RUGGED USB

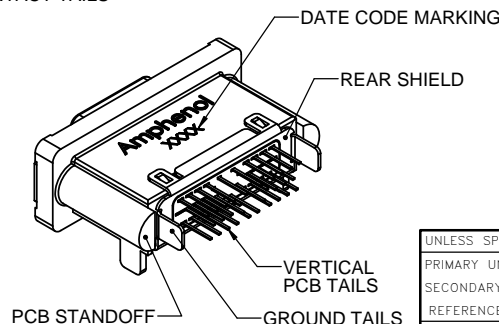
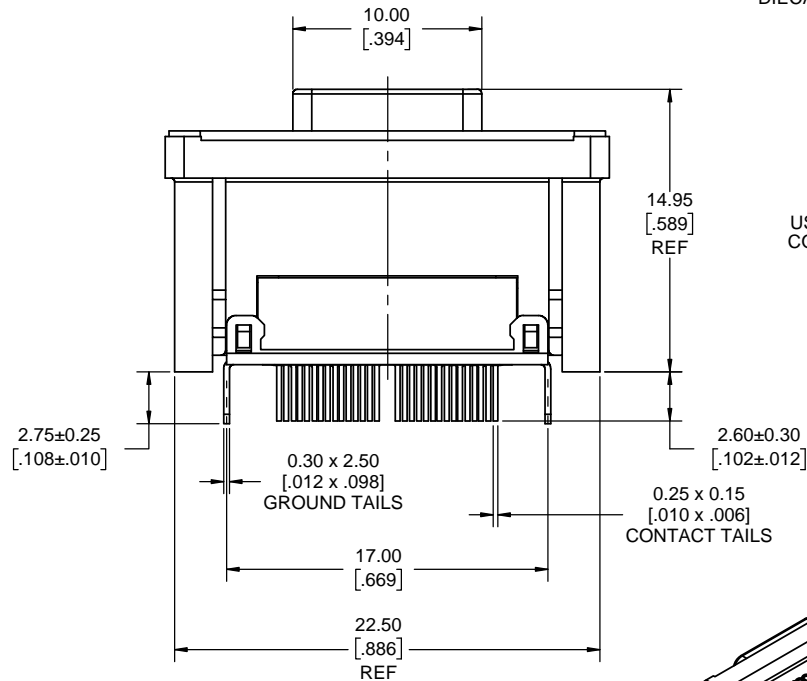
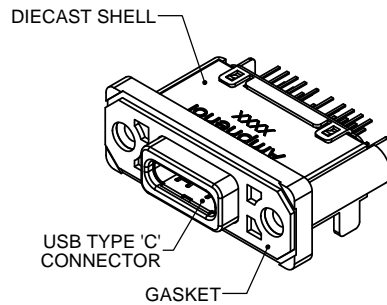
USB TYPE 'C' RECEPTACLE, SINGLE PORT, VERTICAL PCB TAILS, 24 CONTACTS

MOUNTING HOLE THREAD OPTION:
3 = #2-56 UNC THREAD
M = M2.5 X 0.45 THREAD

DUST COVER OPTION
0 = NO DUST COVER SUPPLIED
1 = WITH GREY DUST COVER SUPPLIED
5 = WITH BLACK DUST COVER SUPPLIED
SEE SHEET 2 FOR DUST COVER VIEWS

NOTES:

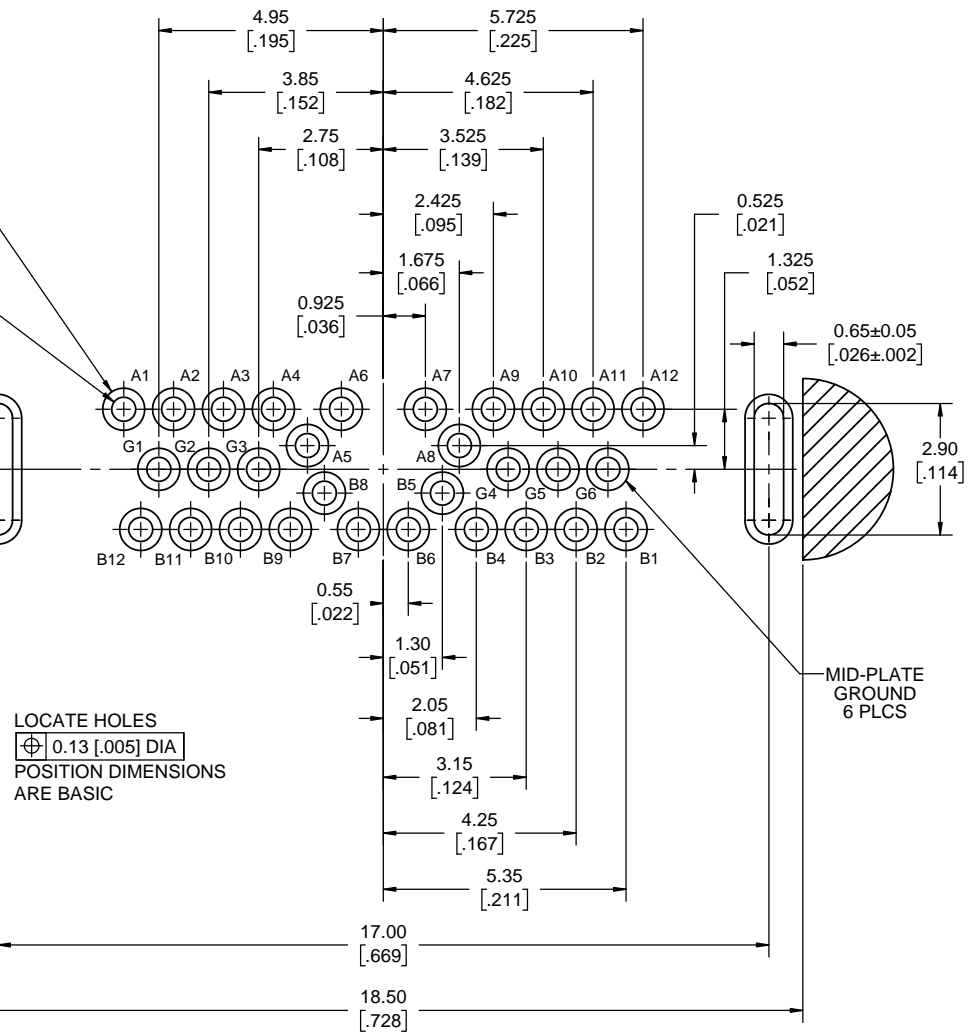
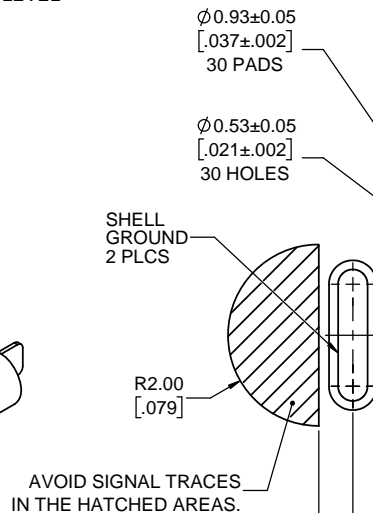
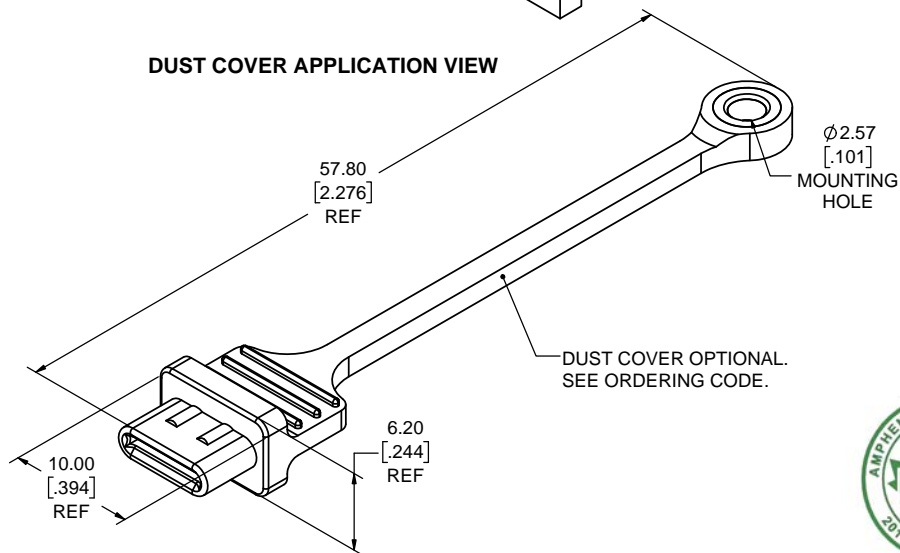
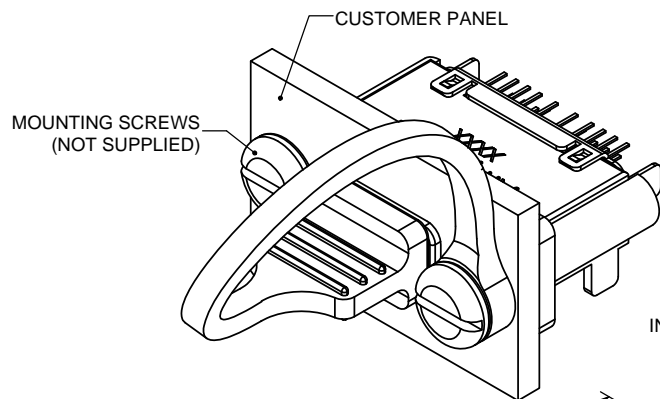
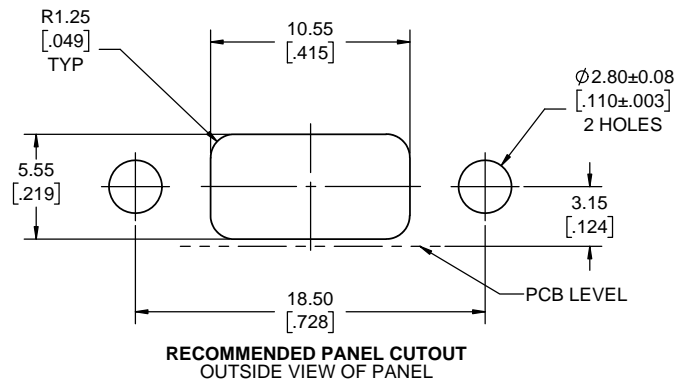
- MATERIAL:**
ALL MATERIALS ARE RoHS COMPLIANT PER EU DIRECTIVE 2011/65/EU AND AMENDMENTS
 - OUTER SHELL: DIECAST ZINC ALLOY, MATTE TIN OVER NICKEL PLATING
 - CONTACTS: COPPER ALLOY, PLATED WITH 0.76µm [30µ"] MINIMUM GOLD OVER 1.27µm [50µ"] MINIMUM NICKEL ON THE MATING AREA WITH MATTE TIN OVER NICKEL ON THE TAILS
 - USB HOUSING: ENGINEERING THERMOPLASTIC, HIGH TEMPERATURE RESISTANT, FLAMMABILITY RATING UL94V-0, BLACK
 - USB SHIELD: STAINLESS STEEL, PASSIVATED
 - REAR COVER: STAINLESS STEEL, MATTE TIN OVER NICKEL PLATING
 - GASKET: CONDUCTIVE SILICONE RUBBER, BLACK
 - DUST COVER - SILICONE RUBBER WITH NICKEL PLATED BRASS BUSHING. SEE ORDERING CODE FOR COLOUR OPTION.
- ENVIRONMENTAL PERFORMANCE** PER IEC 60529 CODE IP67 FOR SEAL BETWEEN MATING AREA AND PCB SIDE OF CONNECTOR. GASKET PROVIDES SEAL TO INSIDE FACE OF ENCLOSURE PANEL.
- CURRENT RATING:** COLLECTIVELY 5A MAX. FOR PINS A4, A9, B4 & B9 PLUS 1.25A MAX. FOR PIN B5 WITH RETURN PATH SHARED THROUGH PINS A1, A12, B1 & B12. ADDITIONAL POSITIONS 0.25A MAX. EACH.
- CONTACT RESISTANCE:** 40 MILLIOHMS MAXIMUM INITIAL.
- OPERATING TEMPERATURE:** -40°C TO +105°C.
- DUST COVERS** MAY BE ORDERED SEPARATELY. SPECIFY
 - PART NUMBER MUSBR-2M5C-004BP FOR GREY COVER OR
 - PART NUMBER MUSBR-2M5C-014BP FOR BLACK COVERFOR HEAVY DUTY DUST COVERS, REFER TO DRAWING P-MUSBR-2M5C-6X3BP.



THIS DOCUMENT CONTAINS PROPRIETARY INFORMATION AND SUCH INFORMATION MAY NOT BE DISCLOSED TO OTHERS FOR ANY PURPOSE OR USED FOR MANUFACTURING PURPOSES WITHOUT WRITTEN PERMISSION FROM AMPHENOL CANADA CORP.

UNLESS SPECIFIED OTHERWISE		DRAWN	J.FISHER	MAR25/15	Amphenol Canada Corp. Commercial Products	
PRIMARY UNITS MILLIMETERS		CHECKED	K.LAMBIE	MAR26/15		
SECONDARY UNITS INCHES		M.E. APP'D			RUGGED USB TYPE 'C' RECEPTACLE, VERTICAL PCB MOUNT, ROHS COMPLIANT	
REFERENCE IN PARENTHESES		Q.A. APP'D				
GENERAL TOLERANCES		DWG APPR.			P-MUSBR-M5C1-XX	
1 DECIMAL PLACE		ENG. REL. NO.		EAR 14354		
2 DECIMAL PLACES		REF.			DWG. NO.	
3 DECIMAL PLACES		THIRD ANGLE SCALE				
ANGULAR DEGREES		PROJECTION			CODE ID NO. 03554 DWG SIZE: X SCALE: 5:1 SHEET 1 OF 2	

REVISIONS			
REV	DESCRIPTION, ECN, EAR NO.	DATE	APP'D
G	PRODUCT DRAWING EAR 14716	FEB21/19	K.L.
H	PRODUCT DRAWING EAR 14747	JUL31/19	K.L.



LOCATE HOLES
 $\varnothing 0.13$ [.005] DIA
 POSITION DIMENSIONS
 ARE BASIC



UNLESS SPECIFIED OTHERWISE	DRAWN	J.FISHER	MAR25/15
PRIMARY UNITS MILLIMETERS	CHECKED	K.LAMBIE	MAR26/15
SECONDARY INCHES	M.E. APP'D		
REFERENCE IN PARENTHESES	Q.A. APP'D		
GENERAL TOLERANCES	DWG APPR.		
1 DECIMAL PLACE	ENG. REL. NO.	EAR 14354	
2 DECIMAL PLACES ±0.15	REF.		
3 DECIMAL PLACES ±0.05	THIRD ANGLE PROJECTION		
ANGULAR DEGREES			

Amphenol Canada Corp. Commercial Products			
RUGGED USB TYPE 'C' RECEPTACLE, VERTICAL PCB MOUNT, ROHS COMPLIANT			
DWG. NO.	P-MUSBR-M5C1-XX		
CODE ID NO. 03554	DWG SIZE: X	SCALE: 5:1	SHEET 2 OF 2

THIS DOCUMENT CONTAINS PROPRIETARY INFORMATION AND SUCH INFORMATION MAY NOT BE DISCLOSED TO OTHERS FOR ANY PURPOSE OR USED FOR MANUFACTURING PURPOSES WITHOUT WRITTEN PERMISSION FROM AMPHENOL CANADA CORP.