

16

1614 23

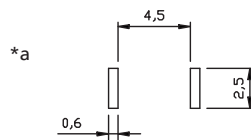
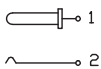
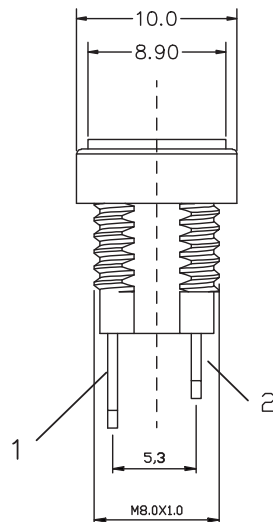
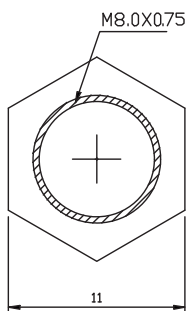
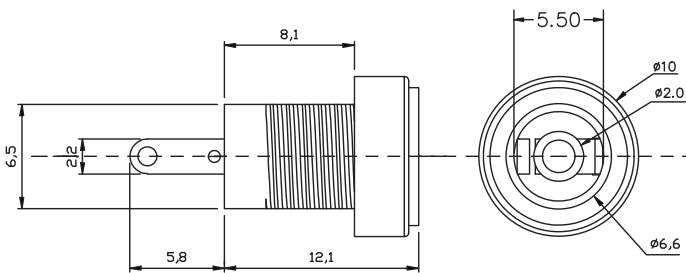
Power supply connectors



Power supply chassis socket, straight version, with solder eyes, for printed circuit boards, for front side mounting

16

1614 23



*a printed circuit board layout

Environmental conditions

Temperature range -30 °C/+70 °C

Materials

Insulating body PA, V-0 according to UL94
Contact spring CuZn, nickel-plated
Contact pin CuZn, nickel-plated
Hexagonal nut CuZn, nickel-plated

Mechanical data

Diameter opening 5.5 mm
Diameter center pin 2.0 mm
Mating cycles 5000¹
Insertion force 3–30 N
Withdrawal force 3–30 N

¹ gemessen mit einem Lehrenstecker

Electrical data (at T_{amb} 20 °C)

Contact resistance $\leq 30 \text{ m}\Omega$
Rated current 2 A
Rated voltage 30 V
Rated impulse voltage 500 V/60 s
Insulation resistance $\geq 100 \text{ M}\Omega$

Associated products

Counterparts
 ☞ 1633 02 ☞ 1633 03 ☞ NES/J 21
 ☞ NES/J 21 W ☞ NES/J 210 ☞ XNES/J 210

16

1614 23

Designation	Pole Number	PU (Pieces)	MDQ (Pieces)
1614 23	2	300	900

Packaging:

in bulk, in a cardboard box or a plastic bag