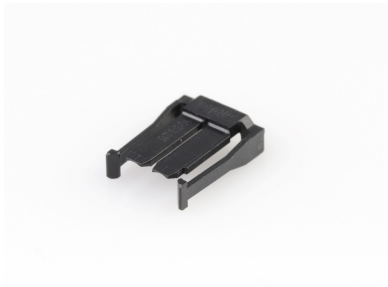




Part Number : [1053251002](#)
Product Description : Nano-Fit Terminal
Position Assurance (TPA) Retainer, 2.50mm
Pitch, 2 Circuits, Black
Series Number : 105325
Status : Active
Product Category : Connector Accessories



Documents & Resources


Drawings
[1053251002_sd.pdf](#)
[PK-105325-100-000.pdf](#)

3D Models and Design Files
[1053251002_stp.zip](#)

Specifications
[AS-105300-100-001.pdf](#)
[PS-105300-100-001.pdf](#)
[1053000000-TS-000.pdf](#)

Product Environment Compliance

Compliance

| | |
|--------------------|---|
| GADSL/IMDS | Not Relevant |
| China RoHS |  |
| EU ELV | Not Relevant |
| Low-Halogen Status | Low-Halogen per IEC 61249-2-21 |
| REACH SVHC | Not Contained per D(2024)7663-DC (21 Jan 2025) |
| EU RoHS | Compliant per EU 2015/863 |

Multiple Part Product Compliance Statements

- Eu RoHS
- REACH SVHC
- Low-Halogen

Multiple Part Industry Compliance Documents

- IPC 1752A Class C

- IPC 1752A Class D
- Molex Product Compliance Declaration
- IEC-62474
- chemSHERPA (xml)

EU RoHS Certificate of Compliance

Part Details

General

| | |
|----------------|--|
| Status | Active |
| Category | Connector Accessories |
| Series | 105325 |
| Description | Nano-Fit Terminal Position Assurance (TPA) Retainer, 2.50mm Pitch, 2 Circuits, Black |
| Comments | Operating temperature is -40° to +105° for tin and -40° to +115° for gold |
| Component Type | Terminal Position Assurance |
| Product Name | Nano-Fit |
| UPC | 889056028554 |

Physical

| | |
|-------------------------------|----------------|
| Circuits (Loaded) | 2 |
| Circuits (maximum) | 2 |
| Color - Resin | Black |
| Lock to Mating Part | Yes |
| Material - Resin | Nylon |
| Net Weight | 0.080/g |
| Number of Rows | 1 |
| Packaging Type | Bag |
| Temperature Range - Operating | -40° to +125°C |

Use with Part(s)

| | |
|---|---------------|
| Description | Part Number |
| Nano-Fit TPA Capable Single Row Receptacle Housings | <u>105307</u> |

| | |
|---|---------------|
| Nano-Fit TPA Capable Dual Row Receptacle Housings | <u>105308</u> |
| Nano-Fit TPA Capable Single Row Plug Housings | <u>200277</u> |
| Nano-Fit Dual Row TPA Capable Plug Housings | <u>201444</u> |
| Nano-Fit BMI TPA Capable Plug Housings | <u>224556</u> |
| Nano-Fit TPA Capable Single Row Receptacle Housings for UL 1569/1007 Wire | <u>226354</u> |
| Nano-Fit TPA Capable Dual Row Receptacle Housings for UL 1569/1007 Wire | <u>226362</u> |

This document was generated on Apr 28, 2025